

ALUMINUM HIGH JUMP PIT PLATFORM
733643A for use with HJ Pit 643V

ASSEMBLY INSTRUCTIONS

Parts list:

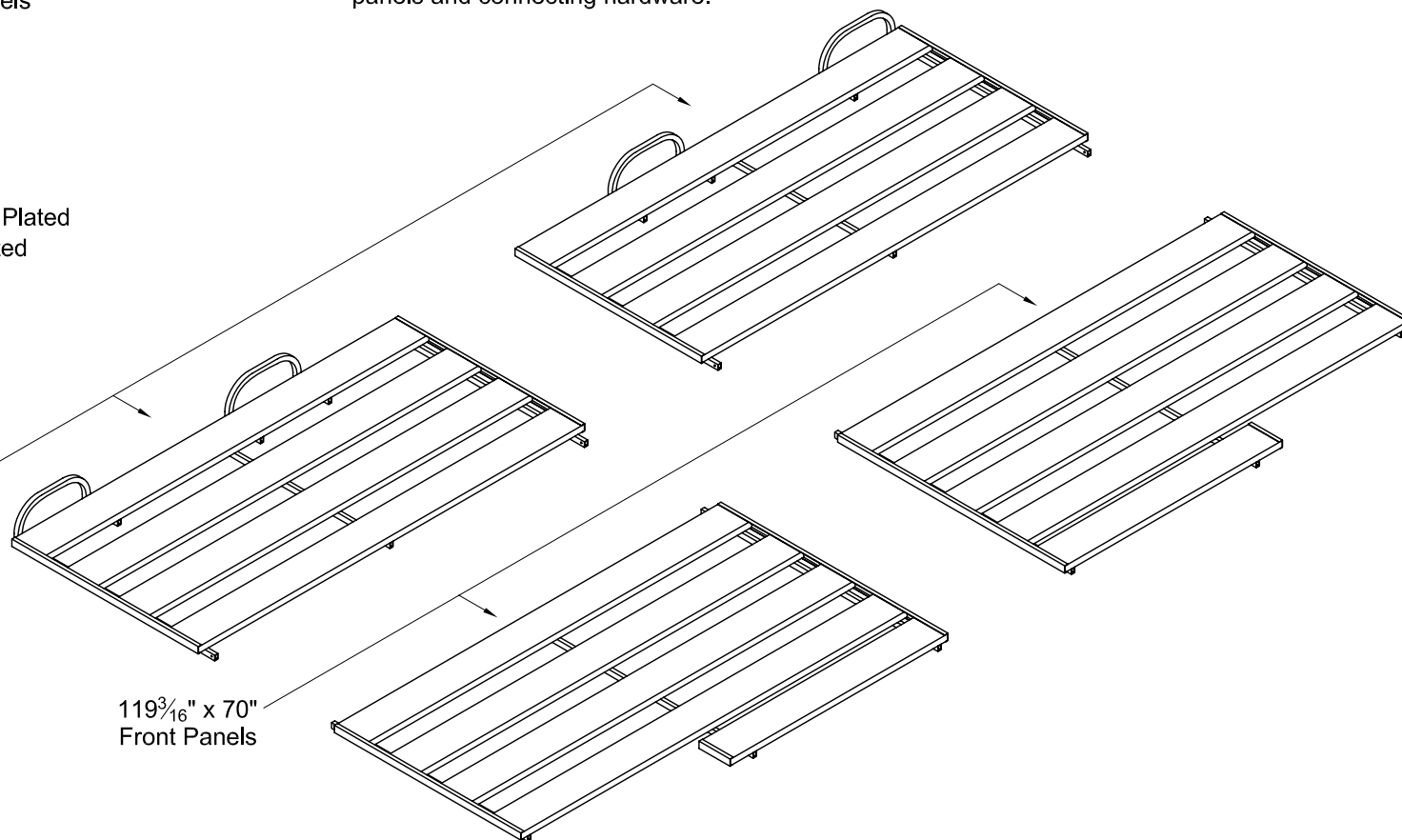
- (2) 119³/₁₆" x 57¹/₂" Rear Panels w/ backstops
- (2) 119³/₁₆" x 70" Front Panels

The 733643A aluminum high jump pit platform consists of 4 platform panels and connecting hardware.

Hardware:

- (8) 5/16"-18 x 1 3/4" Hex Bolt, Plated
- (8) 5/16"-18 x Wing Nut, Plated
- (8) Connector Plates

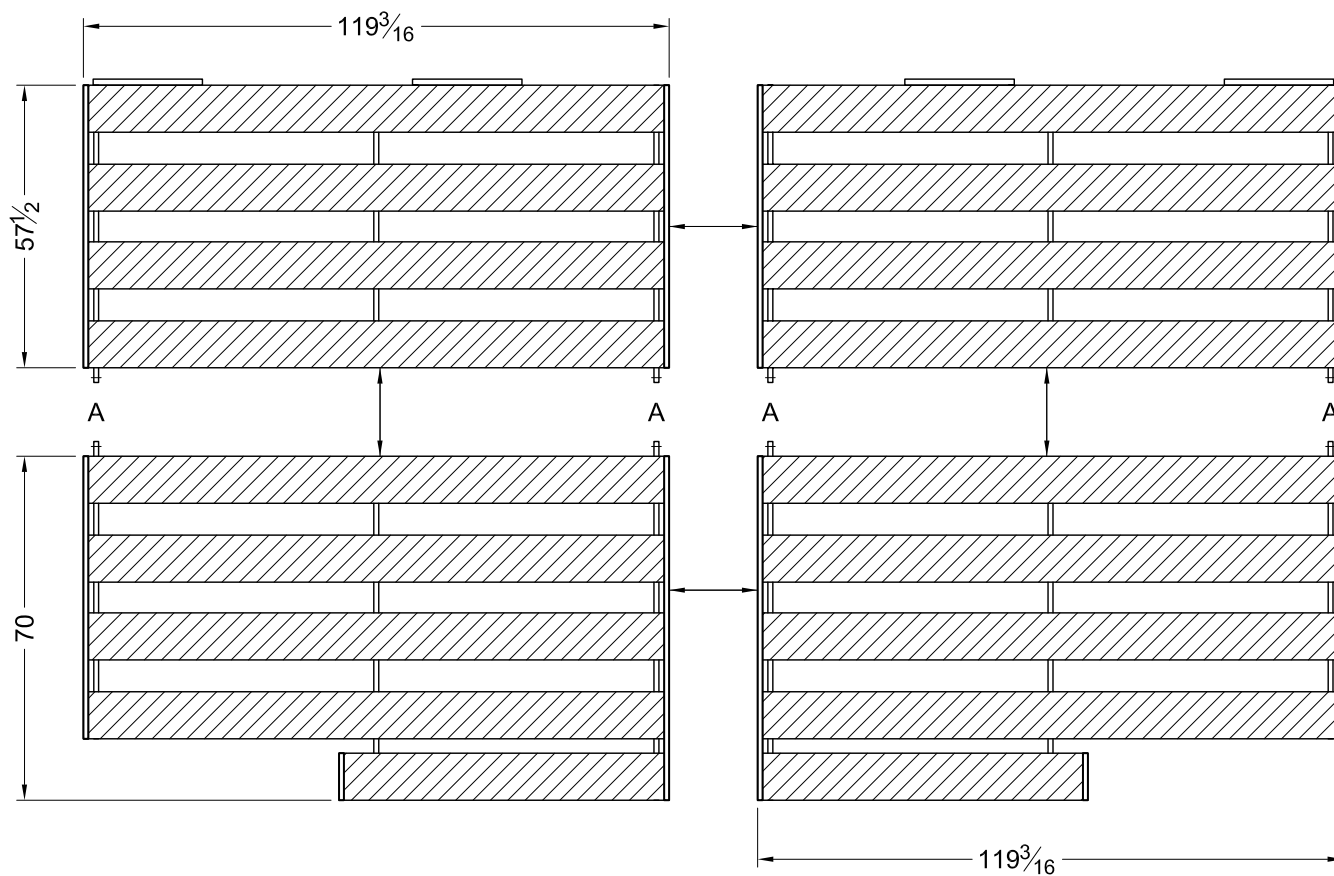
119³/₁₆" x 57¹/₂"
Rear Panels
w/ backstops



119³/₁₆" x 70"
Front Panels

ALUMINUM HIGH JUMP PIT PLATFORM 733643A for use with HJ Pit 643V

ASSEMBLY INSTRUCTIONS



Layout the platform panels as shown. Push the left and right side panels together and fasten the rear panels to the front panels.

Fasten panels together using two 3 1/2" long connector plates, two 5/16"-18 x 1 3/4" hex bolts, and two 5/16"-18 wing nuts.

