



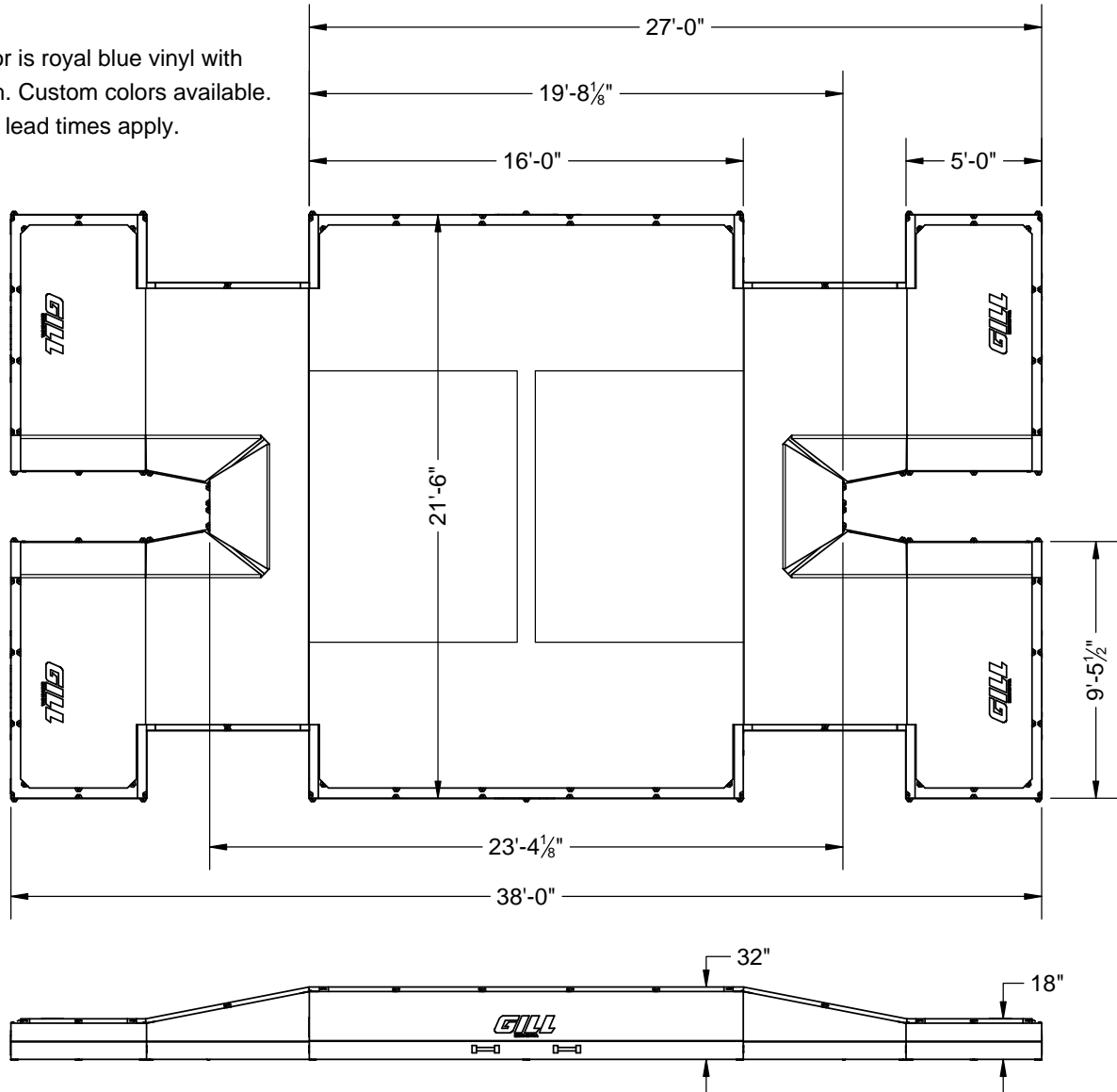
www.gillathletics.com
800-637-3090

66511D - DOUBLE FRONT INTERNATIONAL PV LANDING SYSTEM SPECIFICATION



Meets High School and NCAA specifications. IAAF certified.

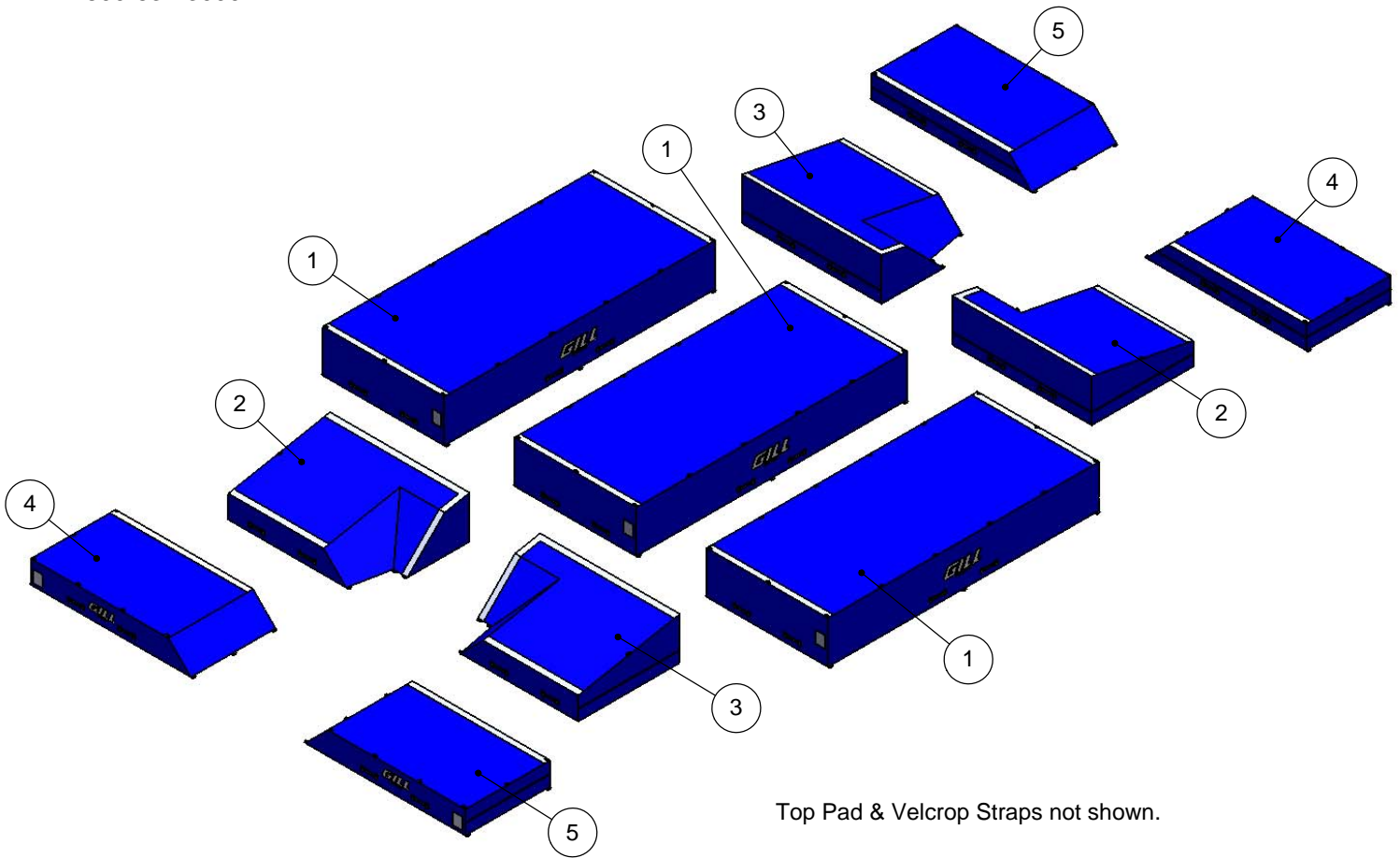
Stock color is royal blue vinyl with gray mesh. Custom colors available. Additional lead times apply.





www.gillathletics.com
800-637-3090

66511D - DOUBLE FRONT INTERNATIONAL PV LANDING SYSTEM SPECIFICATION



Top Pad & Velcro Straps not shown.

ITEM NO.	DESCRIPTION	SIZE	CASING #	FOAM #	QTY.
1	Main Base Section	86" x 192" x 30"	PITS202	FOAM202	3
2	Tri-Slant Section Left	72" x 99" x 30"	PITS301	FOAM301	2
3	Tri-Slant Section Right	72" x 99" x 30"	PITS302	FOAM302	2
4	Front Extension Left	60" x 113 1/2" x 16"	PITS401	FOAM401	2
5	Front Extension Right	60" x 113 1/2" x 16"	PITS402	FOAM401	2
6	Top Pad, Double Front International		PITS507	FOAM507	1
7	Velcro Strap, Tri-Slant to Extension	94 1/2" x 9"	PITS101		4
8	Velcro Strap, Tri-Slant Tongue Joint	48 3/8" x 9"	PITS102		2
9	Velcro Strap, Base Section to Tri-Slants	252" x 9"	PITS103		2
10	Aluminum Karabiner		N1003		58