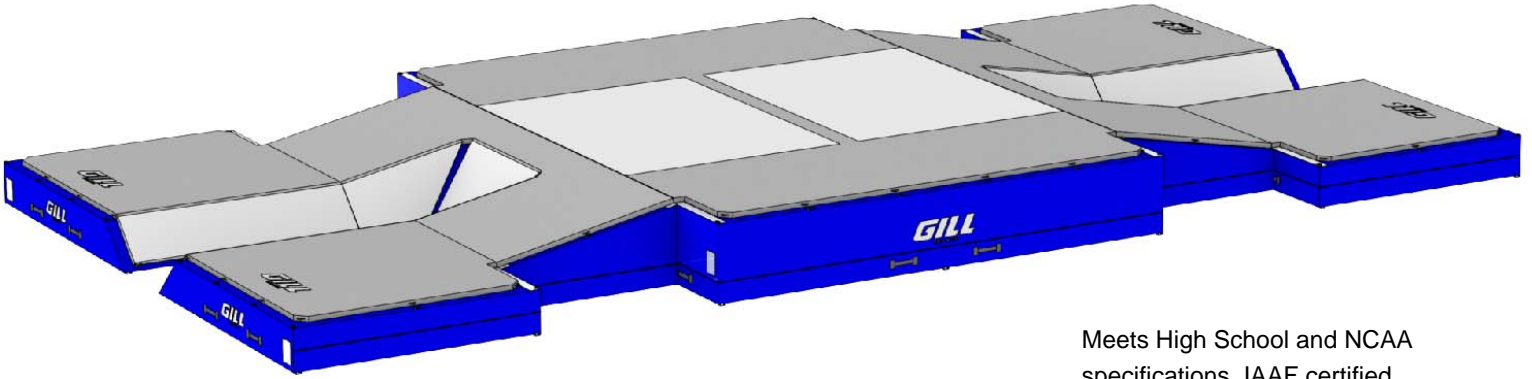




www.gillathletics.com  
800-637-3090

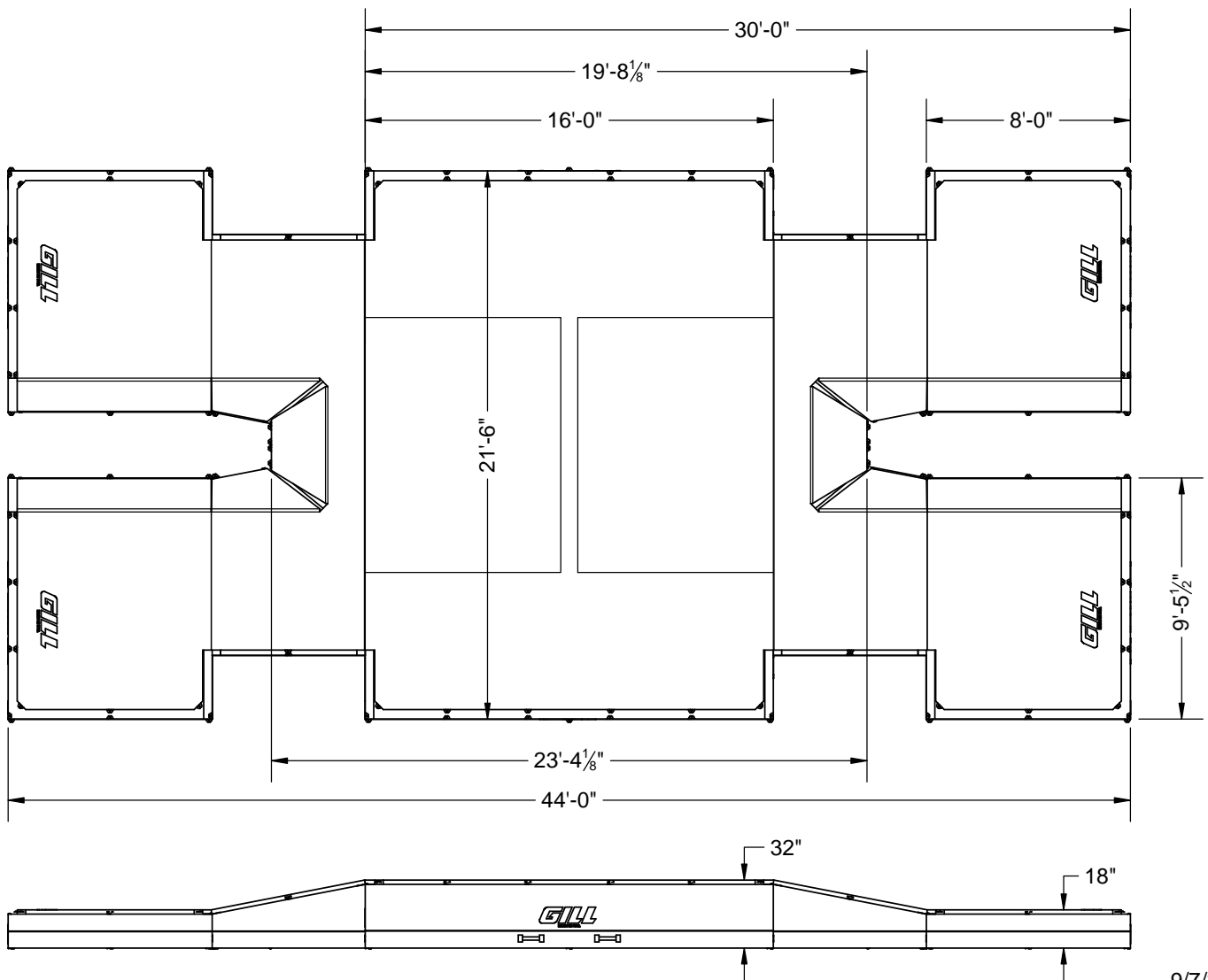
# 66711D - DOUBLE FRONT MAXIMUS PV LANDING SYSTEM SPECIFICATION



Meets High School and NCAA specifications. IAAF certified.

Stock color is royal blue vinyl with gray mesh. Custom colors available. Additional lead times apply.

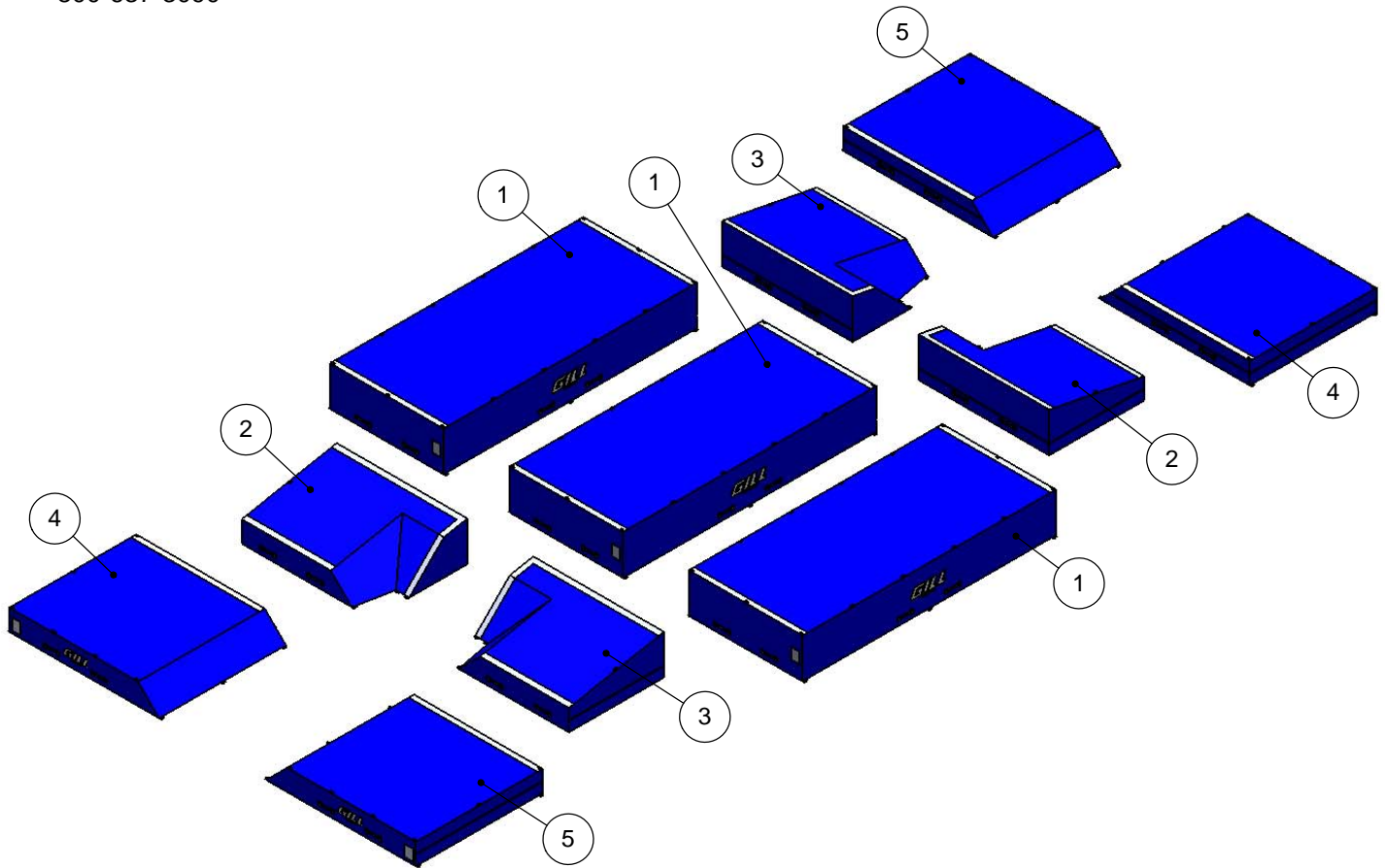
The oversized Maximum PV Landing System is the safest in the industry.





www.gillathletics.com  
800-637-3090

## 66711D - DOUBLE FRONT MAXIMUS PV LANDING SYSTEM SPECIFICATION



Top Pad & Velcro Straps not shown.

ITEM NO.	DESCRIPTION	SIZE	CASING #	FOAM #	QTY.
1	Main Base Section	86" x 192" x 30"	PITS202	FOAM202	3
2	Tri-Slant Section Left	72" x 99" x 30"	PITS301	FOAM301	2
3	Tri-Slant Section Right	72" x 99" x 30"	PITS302	FOAM302	2
4	Front Extension Left	96" x 113 1/2" x 16"	PITS403	FOAM403	2
5	Front Extension Right	96" x 113 1/2" x 16"	PITS404	FOAM403	2
6	Top Pad, Double Front Maximus		PITS506	FOAM506	1
7	Velcro Strap, Tri-Slant to Extension	94 1/2" x 9"	PITS101		4
8	Velcro Strap, Tri-Slant Tongue Joint	48 3/8" x 9"	PITS102		2
9	Velcro Strap, Base Section to Tri-Slants	252" x 9"	PITS103		2
10	Aluminum Karabiners		N1003		58