

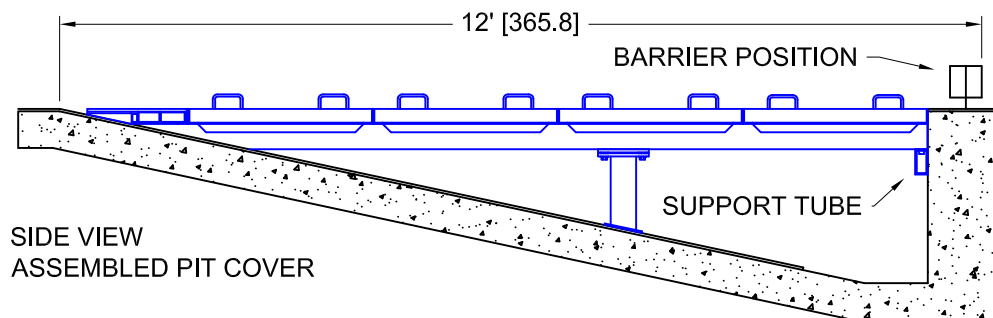
**SPECIFICATIONS**

The 730146 Steeplechase Water Jump Cover is fabricated from 9 1/2" x 1 3/4" x 1/8" wall [24cm x 4.5cm x 3.2mm wall], extruded 6061-T6 aluminum seat plank. Three planks per panel are securely welded together in a frame of 2 3/8" x 1 1/2" x 3/16" [6cm x 3.8cm x 4.8mm] aluminum angle. Each panel comes with four retractable handles for easy installation and removal. The supporting structure for these panels is fabricated from 2" x 4" x 1/4" wall

[5.1cm x 10.2cm x 6.4mm wall] 6061-T6 aluminum tube. Each main support beam has a supporting leg assembly bolted to it. The addition or removal of stainless steel washers allow each leg to be custom fit to its position. Position pins at the front of each beam engage holes in the front wall support tube to lock them in place. To ensure a proper fit, manufacture commences only upon receipt of form 730146-3. Measurements in brackets are in centimeters.



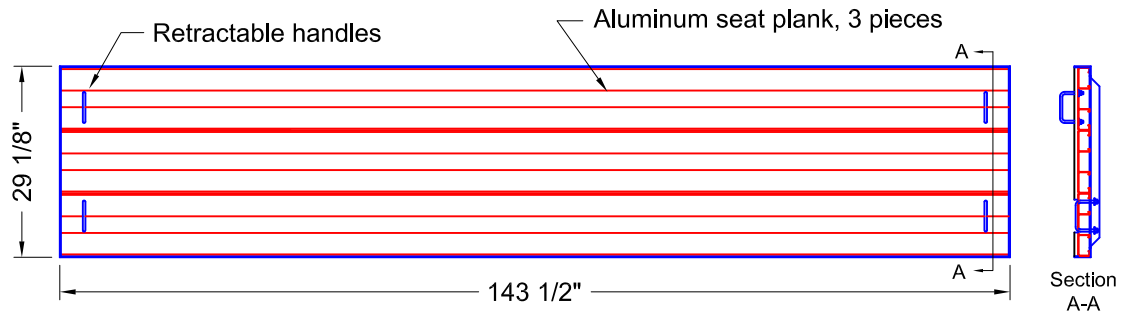
Water Jump Cover shown during pit construction. Artificial track surface is installed on the cover by the contractor.



**SPECIFICATIONS**

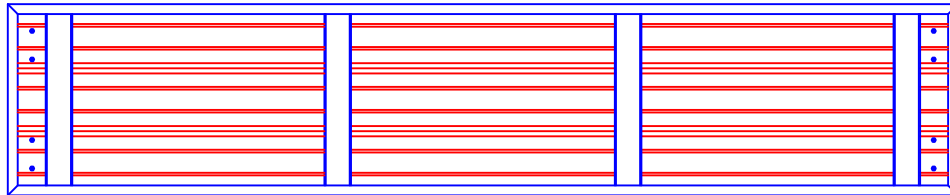
The 730146 Steeplechase Water Jump Cover is fabricated from 9 1/2" x 1 3/4" x 1/8" wall [24cm x 4.5cm x 3.2mm wall], extruded 6061-T6 aluminum seat plank. Three planks per panel are securely welded together in a frame of 2 3/8" x 1 1/2" x 3/16" [6cm x 3.8cm x 4.8mm] aluminum angle. Each panel comes with four retractable handles for easy installation and removal. The supporting structure for these panels is fabricated from 2" x 4" x 1/4" wall

[5.1cm x 10.2cm x 6.4mm wall] 6061-T6 aluminum tube. Each main support beam has a supporting leg assembly bolted to it. The addition or removal of stainless steel washers allow each leg to be custom fit to its position. Position pins at the front of each beam engage holes in the front wall support tube to lock them in place. To ensure a proper fit, manufacture commences only upon receipt of form 730146-4. Measurements in brackets are in centimeters.



NOTE: Track surface material is to be installed in panels by contractor

Welded panel under frame - 2.375" x 1.5" aluminum angle

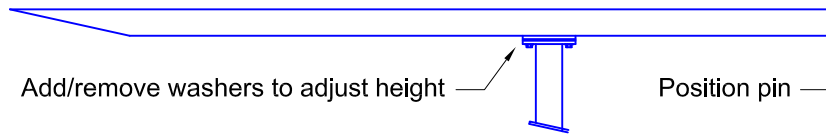


2" x 4" [5.1cm x 10.2cm] Front wall support beam (anchored)



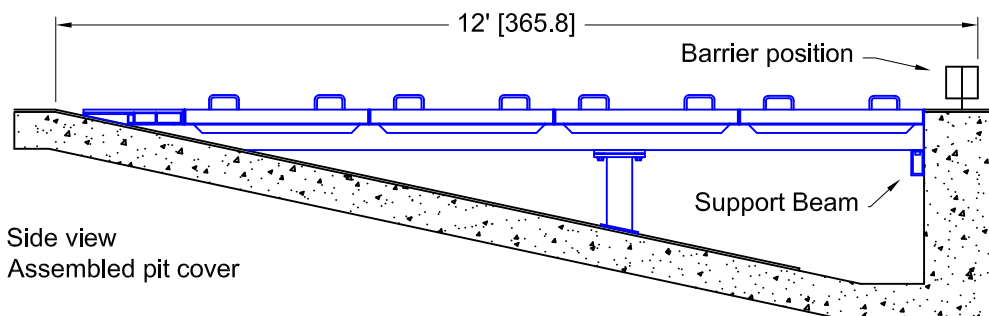
Anchor bolt access holes, 6 places

Support frame beam assembly with leg (removable)

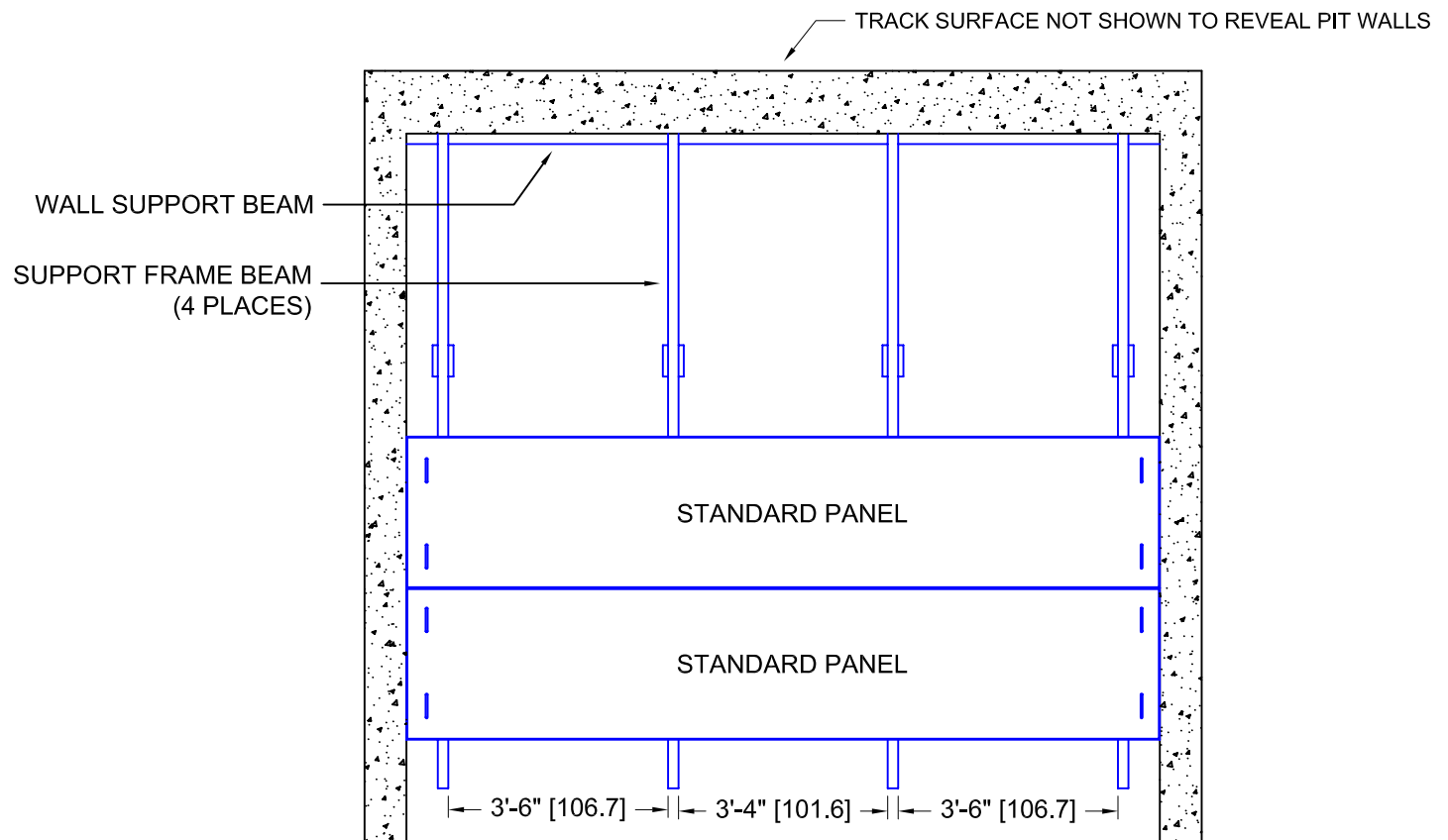
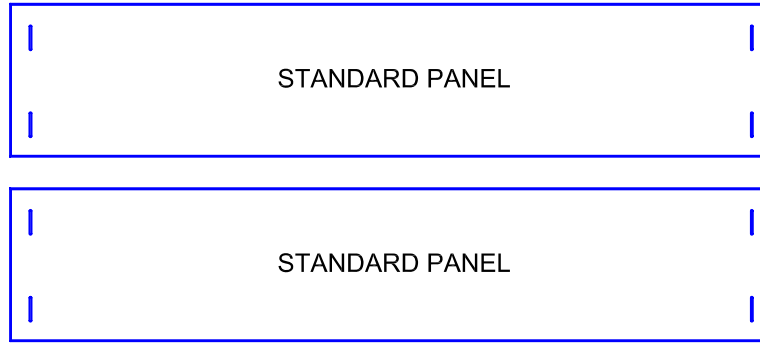


Add/remove washers to adjust height

Position pin



Side view  
Assembled pit cover



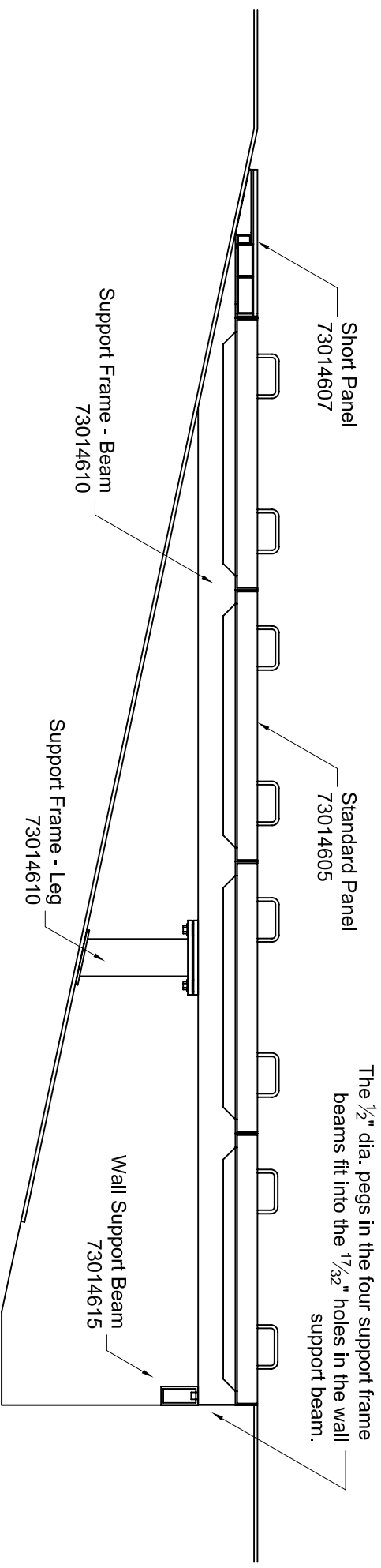
**NOTES:**

1. The above diagram shows the four support frame beams positioned in the water jump pit with two of the cover panels in place.
2. With the front end of these beams resting on the front wall support beam, adjust the height of the leg assembly until both the foot pad and the back end of the beam rest on the pit floor.
3. Manufacture commences only upon receipt or form 730146-3.

## SC WATER JUMP COVER INSTRUCTIONS

Install the wall support beam (73014615) at the proper height and use a 4ft level to ensure the beam is level. The height of the wall support beam will depend on the thickness and type of track surface. The six  $\text{Ø}3\frac{3}{64}$ " holes should be towards the form wall and the  $\text{Ø}1\frac{1}{8}$ " holes should face the pit opening. The seven  $\text{Ø}1\frac{7}{32}$ " holes should face up. The beam should be centered horizontally along the form wall. Use six  $\frac{1}{2}$ "x7" anchors (M2538) and  $\frac{1}{2}$ " fiberglass flat washers (M2537) to secure the beam to the form wall.

Install the handles in the standard panels using 4" sq bend U-bolts (M2299),  $\frac{3}{8}$ " flat washers (M2271), and  $\frac{3}{8}$ "-16 nylock hex nuts (M1291).



The support frame legs are attached to the support frame beam with  $\frac{1}{2}$ "x2" bolts (M2542) and  $\frac{1}{2}$ " flat washers (M2543). Add or remove washers between the support leg and the support beam to make minor adjustments to each leg height.

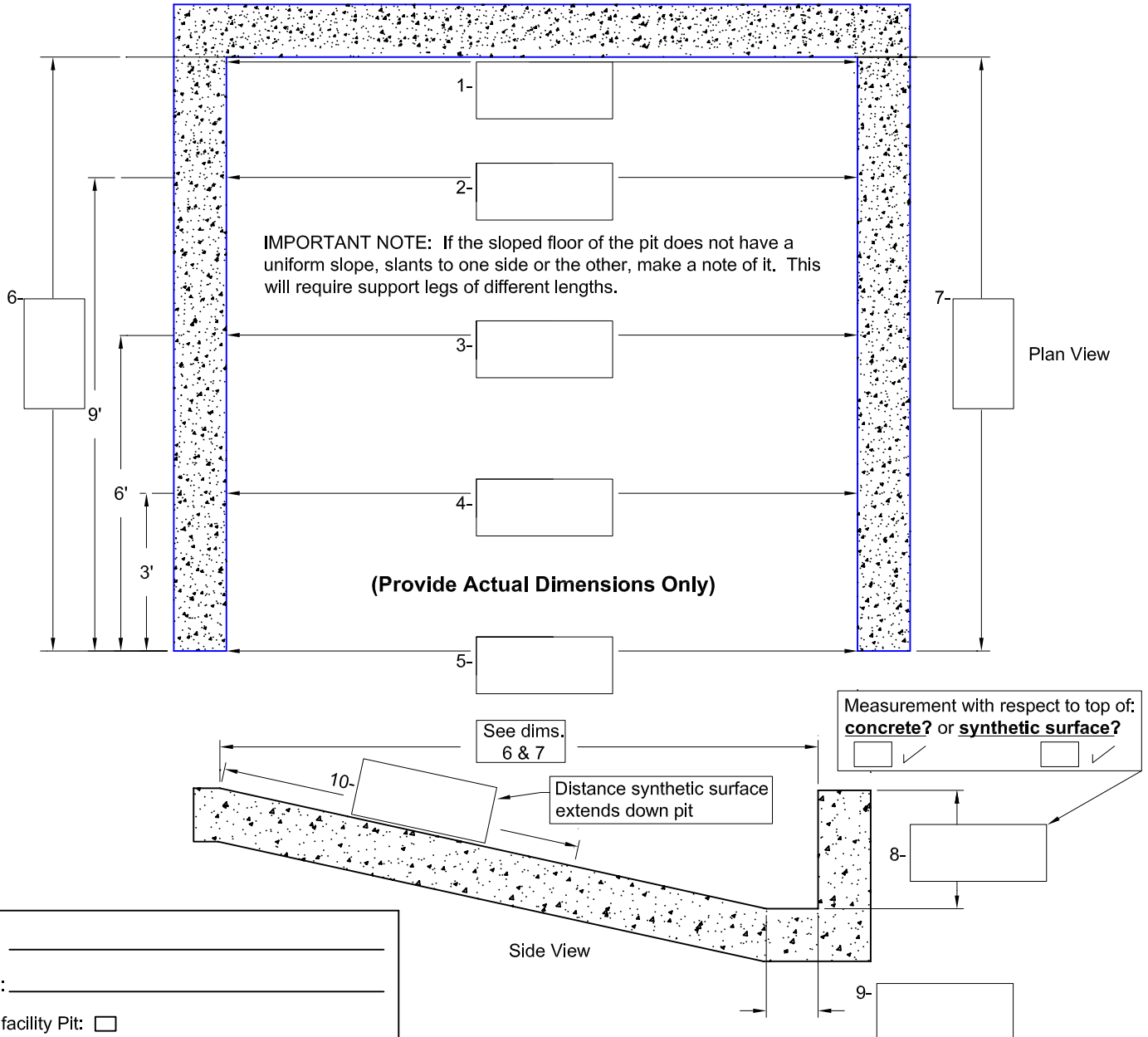


800-637-3090

# STEEPLECHASE WATER JUMP PIT DIMENSION/CERTIFICATION FORM

## INSTRUCTIONS

Use this form to record measurements of the steeplechase water jump pit for which a cover order is requested. Record ACTUAL measurements to within 1/16" [1 mm]. There are ten entry boxes provided below to record the values. Indicate if measurements are with respect to concrete or synthetic surfaces. Please fill in the project, point of contact, and certification information in the blank spaces provided. For new construction, the approval signature block must be signed by a facility officer to certify that the "as-built" pit dimensions have been fully accepted by the purchasing authority.



Project

Title: \_\_\_\_\_

Location: \_\_\_\_\_

Existing facility Pit:

New Construction:

Point of Contact

Name: \_\_\_\_\_ Address: \_\_\_\_\_

Phone No.: \_\_\_\_\_ Fax No.: \_\_\_\_\_

Certification

Signature and Date: \_\_\_\_\_

Name and title of authorizing official: \_\_\_\_\_

Internal Use

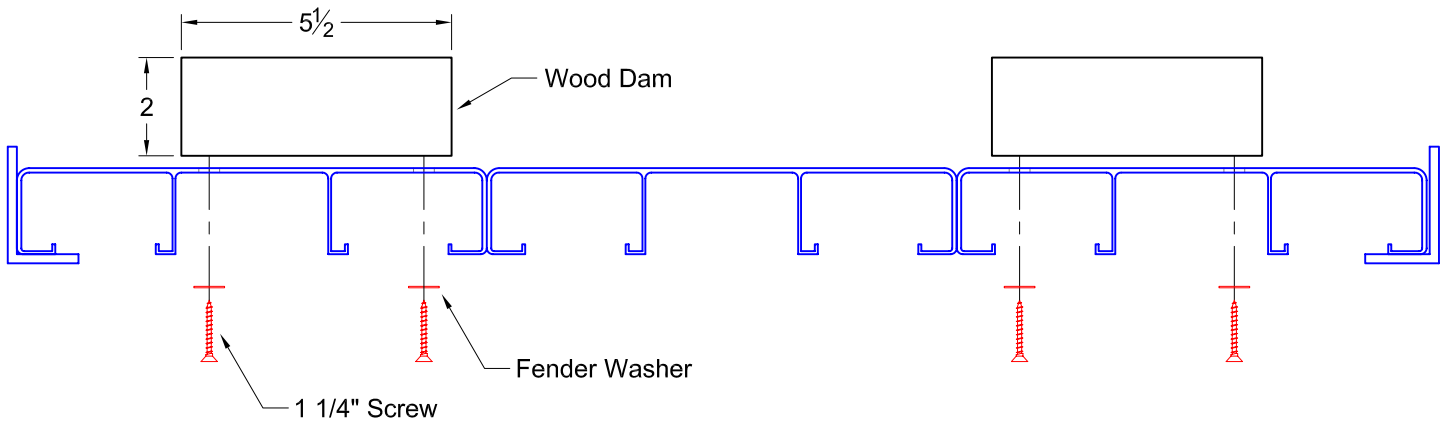
Purchase Order: \_\_\_\_\_

Work Order: \_\_\_\_\_

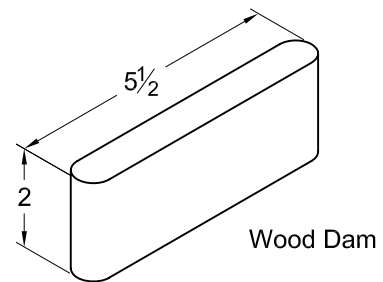
Ship Date: \_\_\_\_\_

GILL ATH  
10/28/04  
730146-4

The Cover Handle Dam Kit will keep poured track surface from running through the handle holes and box out a groove in the track surface for the handles to lay flush.



There are eight holes in a standard cover panel for mounting the handle. Secure the wood dams over these holes with screws and fender washers from underneath the cover panel.



Since the wood dam is going to be removed after the track surface is set, it is suggested that the wood dams be coated with a release agent.

Pour the track surface to the proper specifications.

After the surface has set, remove the screws and washers from underneath the cover panel. Carefully pull the wood dams up out of the track surface.

Now the handles can be installed in the cover panel.