



F500 Steeplechase Waterjump

Installation Guide

Read all instructions before installing!!!

Excavation

Establish the proper location for the water jump pit based on plans and specs. Excavate a pit which is approximately 18' wide by 16' long, with depth of the pit being 1'0" deep at the shallow (exit) end and 3'3" at the deep (entry) end. Consider local soil conditions to be sure that the pit provides proper sub-surface drainage before installing formwork. Prepare base according to plans and specs, generally 8" or more of granular material.

Assembly

The wall form is designed to be filled with concrete, in effect, acting as a 'stay-in-place' form. Place the front panel in position inside the pit on support blocks placed under the lowest surface of the formwork. The uppermost edge of the form should be at finished grade less the thickness of the artificial track surface to be installed. Establish the final location of the pit then secure the form into position with rebar stakes driven into the sub grade alongside the form. Position the side and corner panels as per drawing "F500A ASSY" and assemble with stainless steel hardware provided. The mounting flanges on the side wall inner panels are fastened behind the ends of the front wall inner panel. When all five panels are assembled, level the entire form by shimming at the support blocks until the uppermost surface of the structure is at the proper grade, while also squaring up the assembly by measuring corner to

corner (diagonal) dimensions and adjusting until these are equal. Alternately, the five panels can be bolted together first and then placed in position on the leveling blocks inside the pit, then leveled and squared. Barrier mounting plate anchor studs are cast into the front concrete wall. Refer to drawing "F500A" and verify centerline spacing is 117".

Concrete Placement

Place reinforcing steel or wire mesh in the pit floor. Concrete can now be placed for the entire structure in either one pour or two. Verify form walls are square and check the width of the structure at the top before and during the concrete pour to insure a proper dimension for the pit covers. Pit inside width must be maintained at 12 feet. Finish concrete inside the wall forms to the top of the double wall structure. If two pours are used, concrete for the floor is then placed and finished as usual. After the concrete has set hard, backfill the entire structure according to plans and specifications.

Synthetic track surfacing will be finished to the uppermost surface of the form, covering the entire wall structure, and down the sloped floor of the pit to a distance specified in the track plans. The stainless steel surface mounted beam anchor plates must be installed on top of the front wall before the track surface is applied.



F500 Steeplechase

Set the form in the dug out area for the pit. Include panel for support for the floor. Level to finished grade, square by measuring diagonal and insert 12' supports.



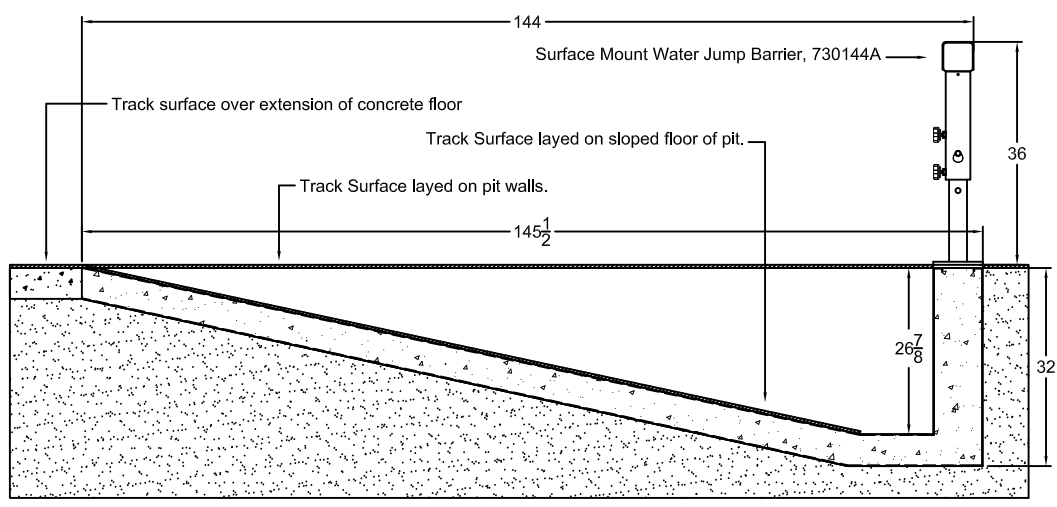
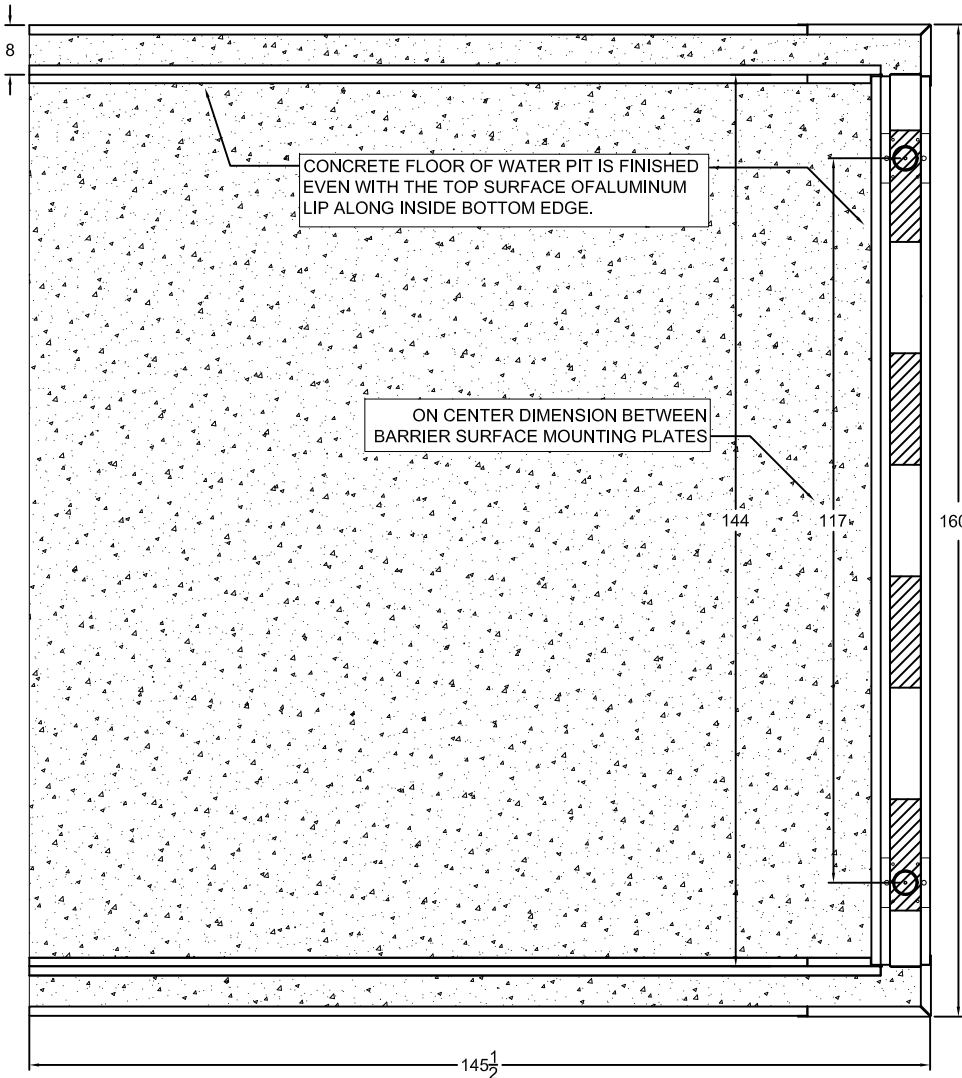
Pour concrete into form and level off. Use ledges on the side walls and front wall to level off the floor.



F500 Steeplechase Water Jump Form

Here is a finished look at the water pit. Most of the sides and floor are covered with track surface. Please refer to track specifications and rules for surfaces to be covered with track surface material.



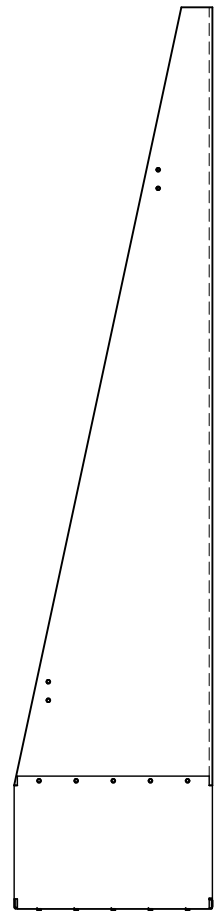


GILL PART #: F500
 ATHLETICS DWG #: F500A Spec
 Champaign, IL 800-637-3090 Surface Mount Beam
 Water Jump Form

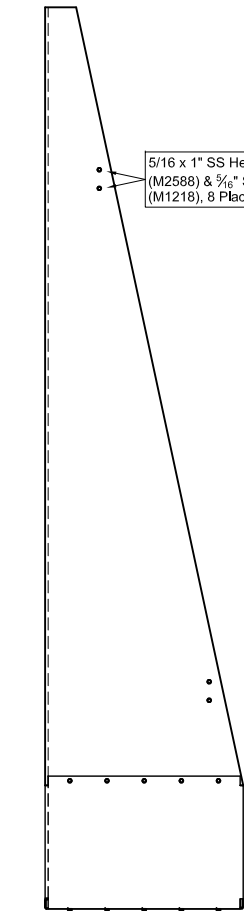
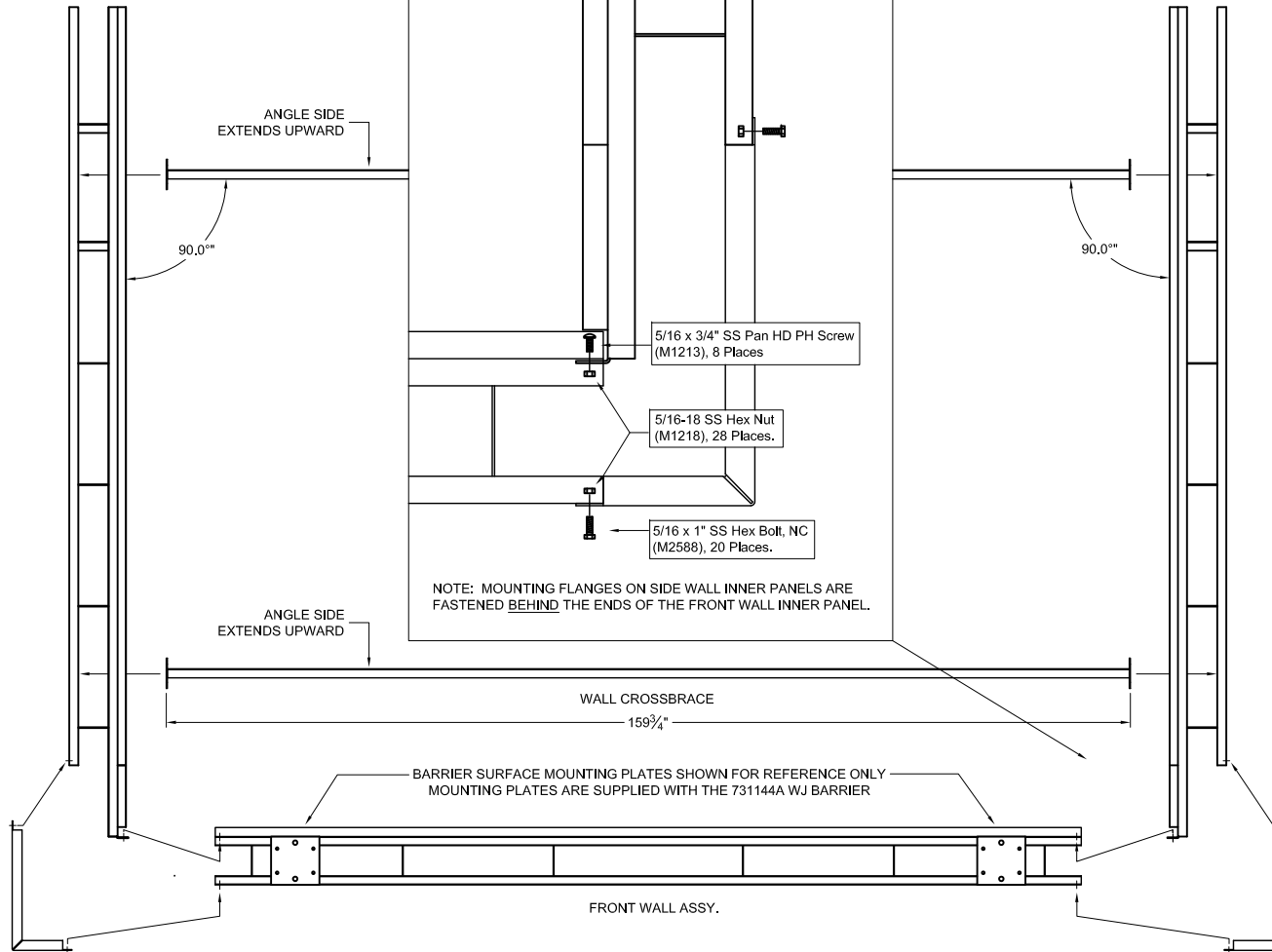
SCALE: (1/20)
 DRAWN BY: JWD
 DATE: 03/27/08

LEFT SIDEWALL ASSY.

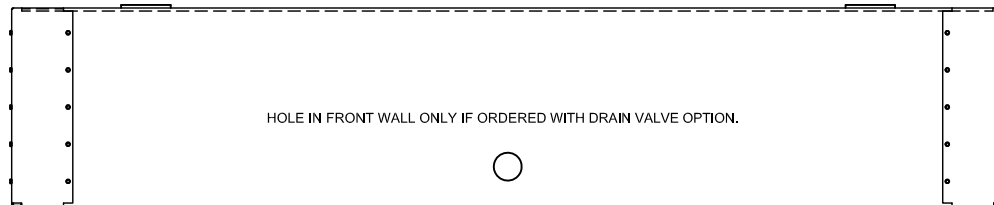
RIGHT SIDEWALL ASSY.



LEFT CORNER PANEL



RIGHT CORNER PANEL



HOLE IN FRONT WALL ONLY IF ORDERED WITH DRAIN VALVE OPTION.

ANGLE SIDE
EXTENDS UPWARD

90.0°

ANGLE SIDE
EXTENDS UPWARD

WALL CROSSBRACE
159 3/4"

BARRIER SURFACE MOUNTING PLATES SHOWN FOR REFERENCE ONLY
MOUNTING PLATES ARE SUPPLIED WITH THE 731144A WJ BARRIER

FRONT WALL ASSY.

5/16 x 3/4" SS Pan HD PH Screw
(M1213), 8 Places

5/16-18 SS Hex Nut
(M1218), 28 Places.

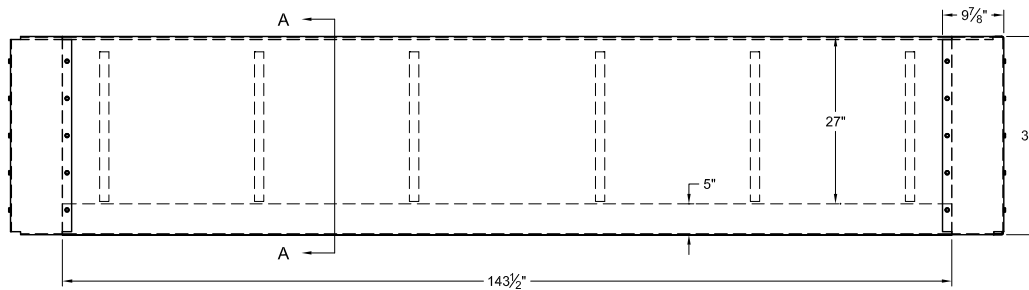
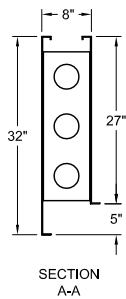
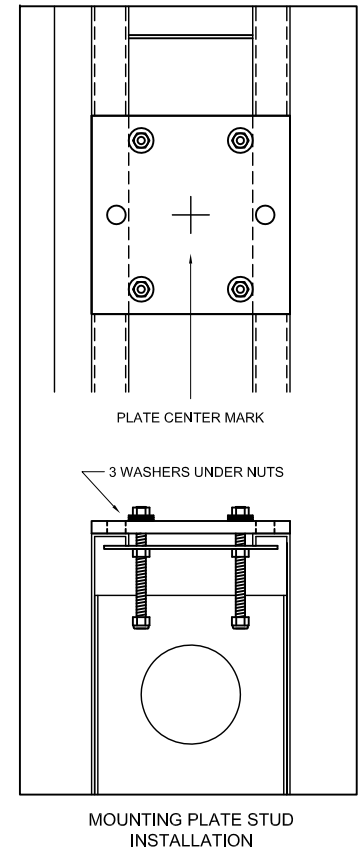
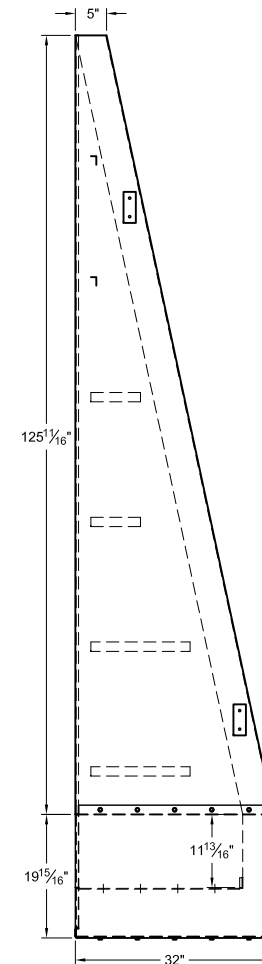
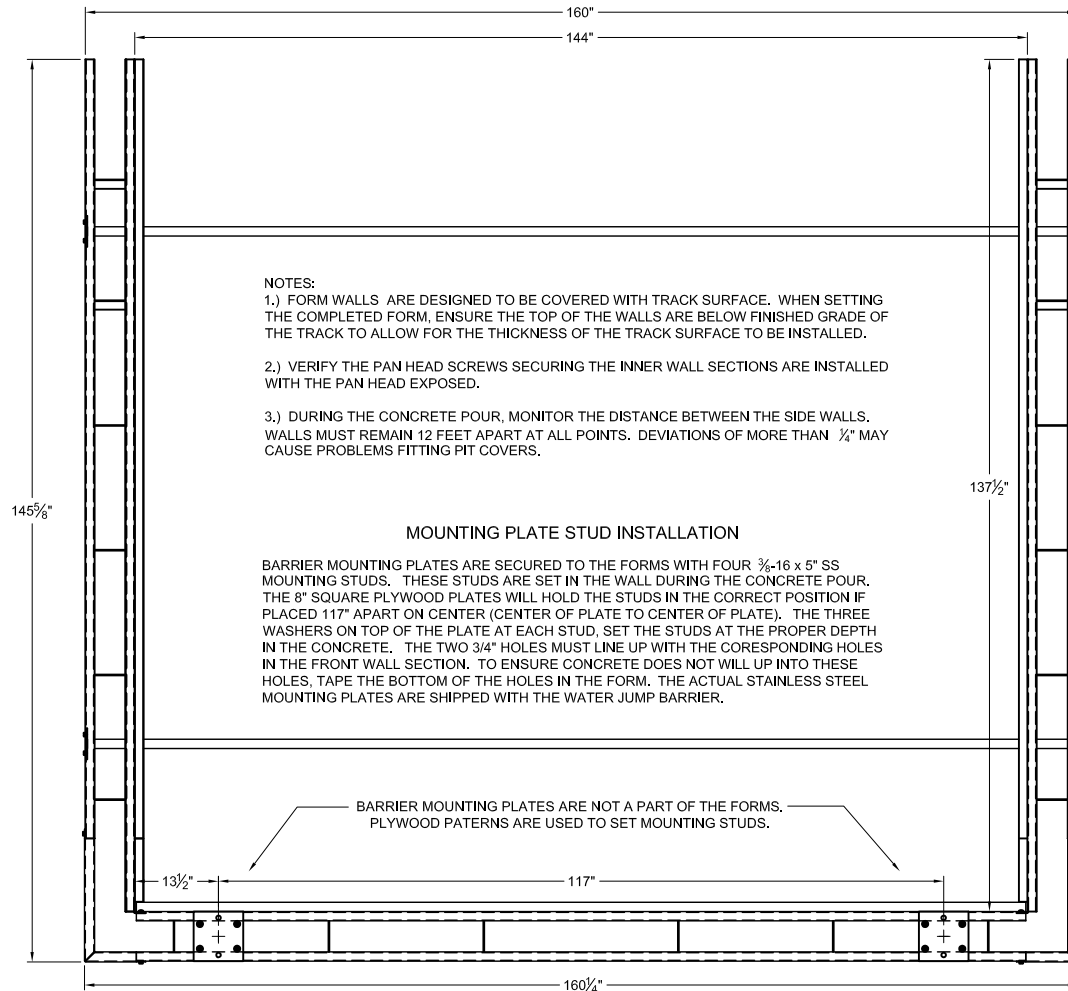
5/16 x 1" SS Hex Bolt, NC
(M2588), 20 Places.

NOTE: MOUNTING FLANGES ON SIDE WALL INNER PANELS ARE
FASTENED BEHIND THE ENDS OF THE FRONT WALL INNER PANEL.

5/16 x 1" SS Hex Bolt, NC
(M2588) & 5/16" SS Hex Nut
(M1218), 8 Places.

90.0°

GILL PART #: F500
 DWG #: F500A ASSY
 ATHLETICS F500 WATER JUMP
 CHAMPAIGN, IL 800-637-3090 FORM ASSEMBLY
 SCALE: (1/20)
 DRAWN BY: JWD
 DATE: 04/07/08



REVISIONS	

GILL PART #: F500A
ATHLETICS DWG #: F500A
 CHAMPAIGN, IL 800-637-3090 F500A ASSEMBLED FORM
 SCALE: (1/20) R & D:
 DRAWN BY: JWD PROD:
 DATE: 06/02/08 PURCH: