



## **F510 Steeplechase Water Jump with Sleeves**

### **Installation Guide**

*Read all instructions before installing!!!*

#### **Excavation**

Establish the proper location for the water jump pit based on plans and specs. Excavate a pit which is approximately 18' wide by 16' long, with depth of the pit being 1'0" deep at the shallow (exit) end and 3'3" at the deep (entry) end. Consider local soil conditions to be sure that the pit provides proper sub-surface drainage before installing formwork. Prepare base according to plans and specs, generally 8" or more of granular material.

#### **Assembly**

The wall form is designed to be filled with concrete, in effect, acting as a 'stay-in-place' form. Place the front panel in position inside the pit on support blocks placed under the lowest surface of the formwork. The uppermost edge of the form should be at finished grade less the thickness of the artificial track surface to be installed. Establish the final location of the pit then secure the form into position with rebar stakes driven into the sub grade alongside the form. Position the side and corner panels as per drawing "F500A ASSY" and assemble with stainless steel hardware provided. The mounting flanges on the side wall inner panels are fastened behind the ends of the front wall inner panel. When all five panels are assembled, level the entire form by shimming at the support blocks until the uppermost surface of the structure is at the proper grade, while also squaring up the assembly by measuring corner to

corner (diagonal) dimensions and adjusting until these are equal. Alternately, the five panels can be bolted together first and then placed in position on the leveling blocks inside the pit, then leveled and squared. The ground sleeves are welded in place in the front wall form. To properly orient the lower legs of the water jump barrier, there is a ½" thru bolt in the base of each sleeve. Before pouring concrete, verify these bolts are in place. The sleeves extend ½" above the form to be even with the finished track surface at this point. Proper barrier height requires ½" of track surface over the top of the finished pit walls.

#### **Concrete Placement**

Place reinforcing steel or wire mesh in the pit floor. Concrete can now be placed for the entire structure in either one pour or two. Take care that concrete does not get into the sleeve tubes. Finish concrete inside the wall forms to the top of the double wall structure. If two pours are used, concrete for the floor is then placed and finished as usual. After the concrete has set hard, backfill the entire structure according to plans and specifications. Check the width of the structure before concrete sets to insure a proper dimension for the pit covers. Maintain vertical as well as horizontal squareness.

Synthetic track surfacing will be finished to the uppermost surface of the form, covering the entire wall structure, and down the sloped floor of the pit to a distance specified in the track plans.



### F500 Steeplechase

Set the form in the dug out area for the pit. Include panel for support for the floor. Level to finished grade, square by measuring diagonal and insert 12' supports.



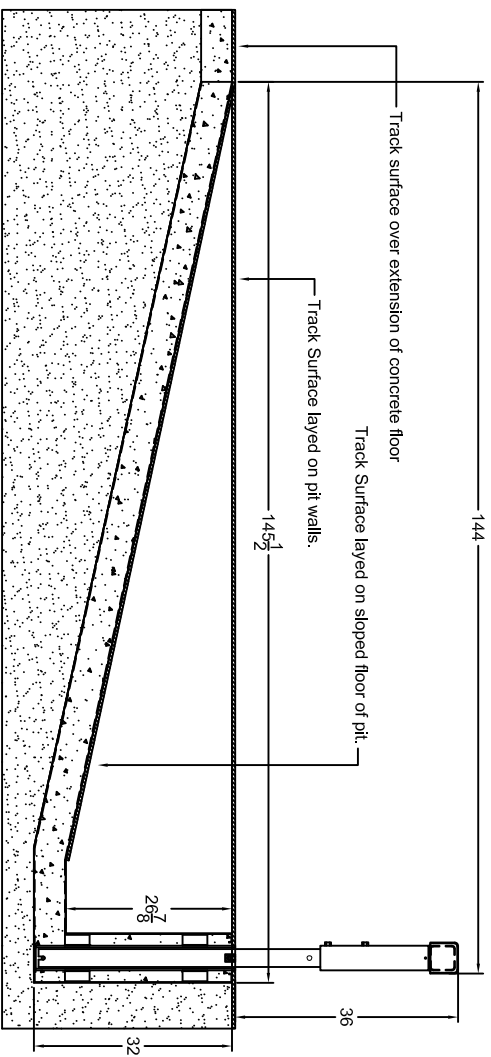
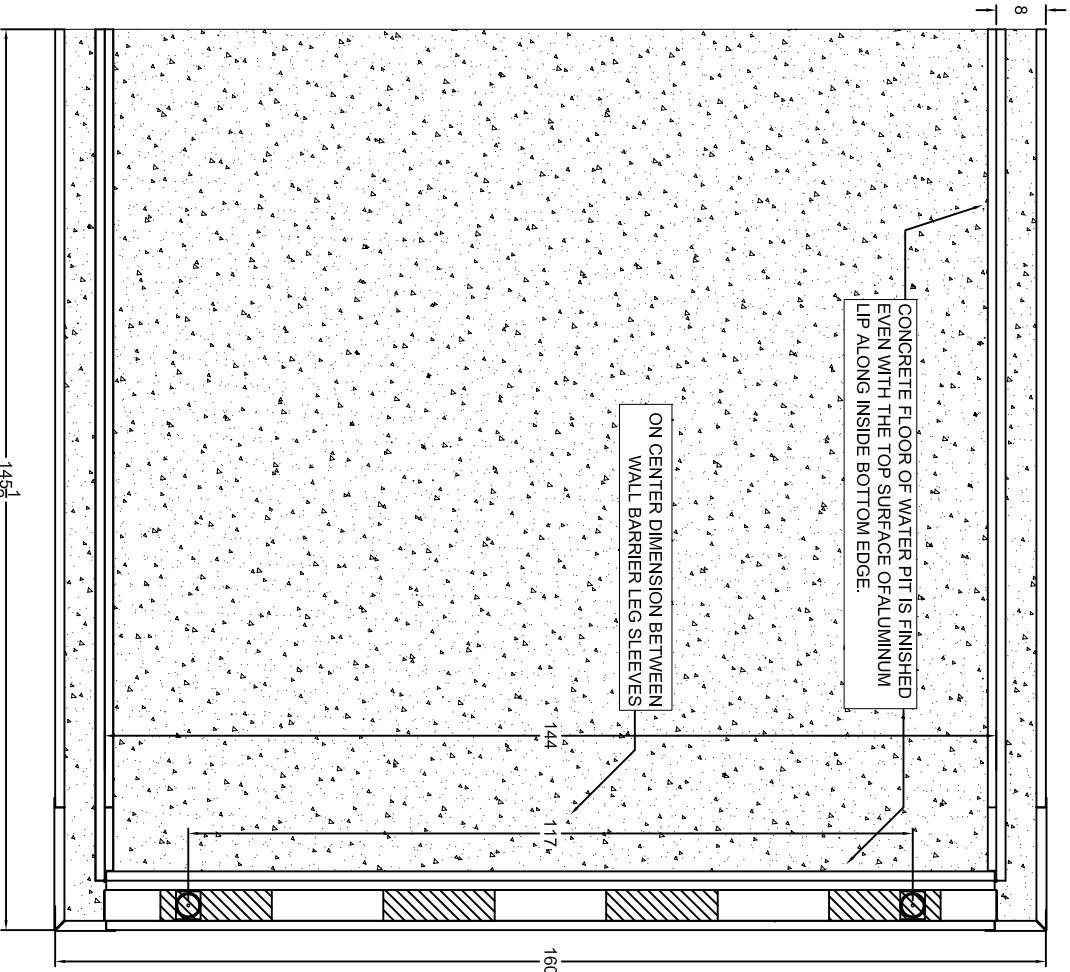
Pour concrete into form and level off. Use ledges on the side walls and front wall to level off the floor.



**F500 Steeplechase Water Jump Form**

Here is a finished look at the water pit. Most of the sides and floor are covered with track surface. Please refer to track specifications and rules for surfaces to be covered with track surface material.

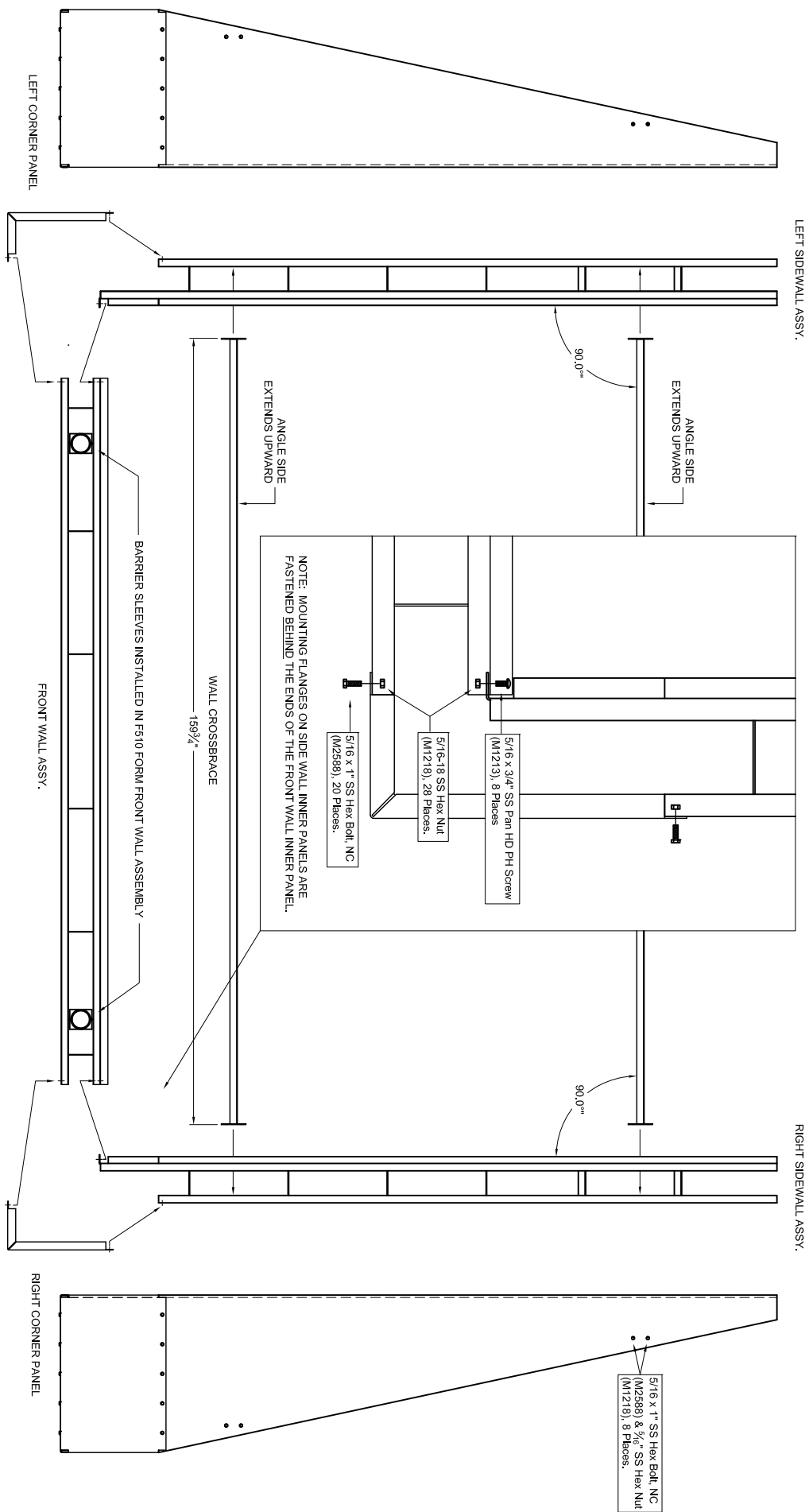




**GILL**  
 ATHLETICS  
 Champaign, IL 800-637-3090

PART #: F510  
 DWG #: F510A Spec  
 Ground Sleeve Water  
 Jump Form

SCALE: (1/20)  
 DRAWN BY: JWD  
 DATE: 03/27/08



**GILL**

ATTALZETICS

CHAMPAIN, IL 600-437-3080

SCALE: (1/20)

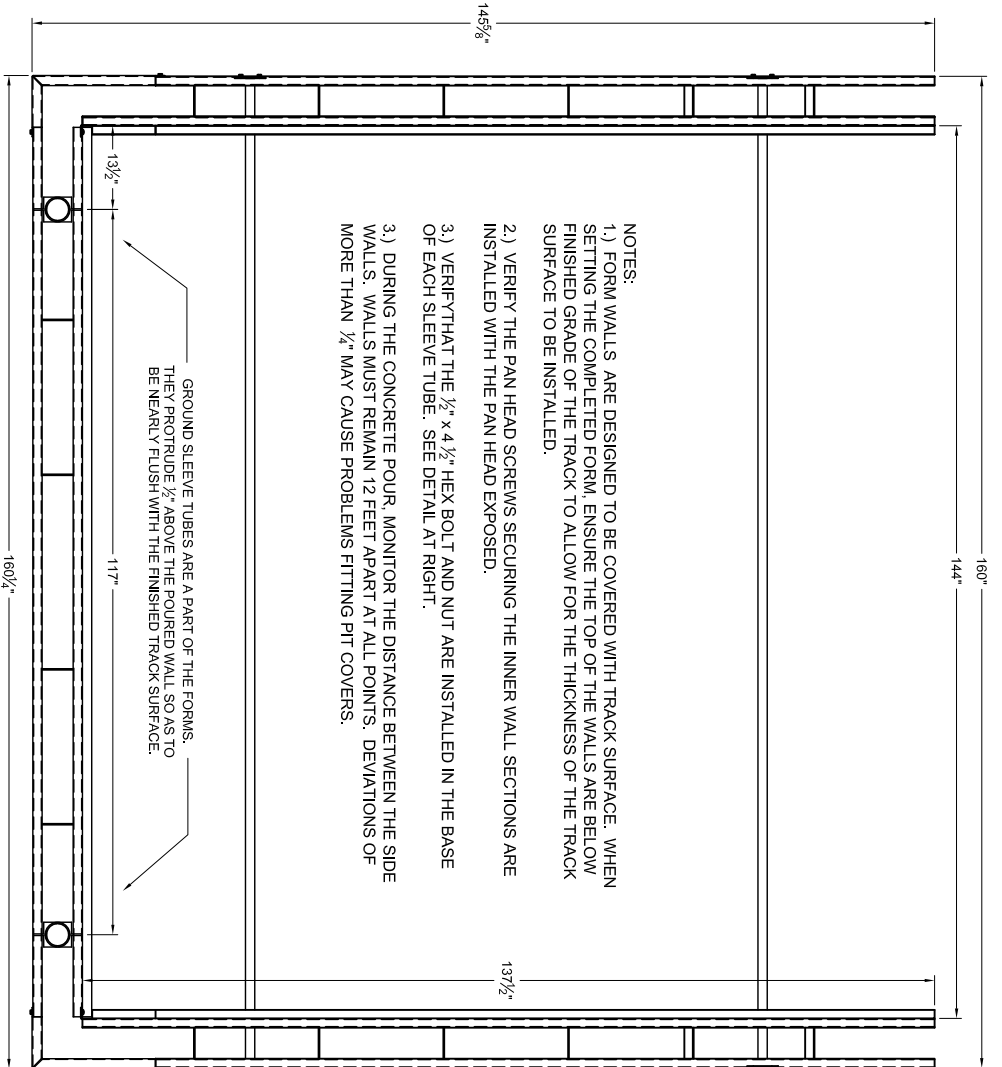
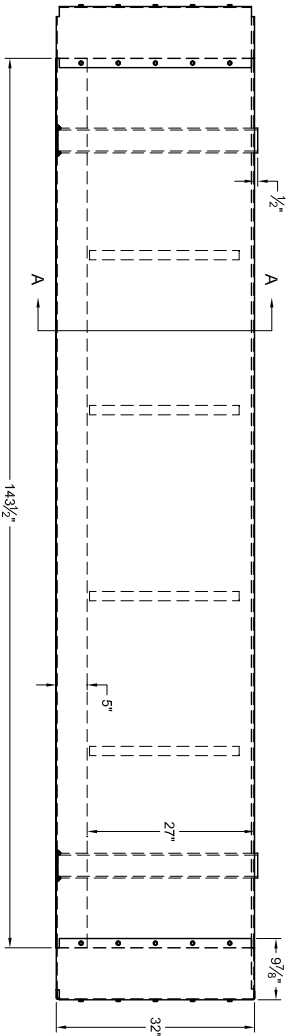
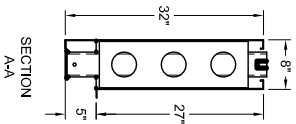
DRAWN BY: JWD

DATE: 04/07/08

PART #: F510

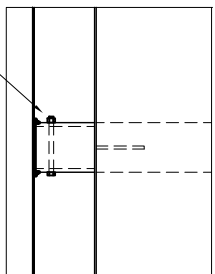
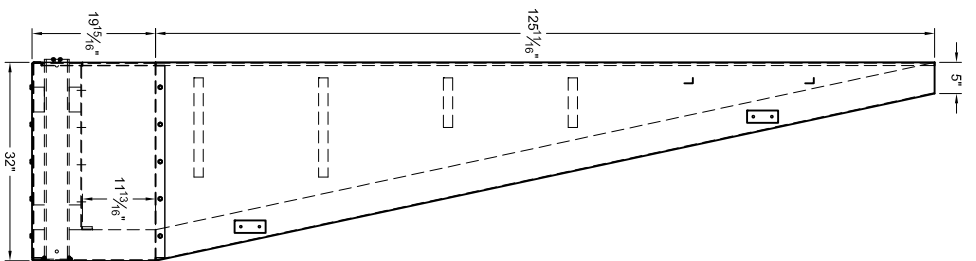
DWG #: F510A ASSY

F510 WATER JUMP FORM ASSEMBLY WSLEEVES



- NOTES:
- 1.) FORM WALLS ARE DESIGNED TO BE COVERED WITH TRACK SURFACE. WHEN SETTING THE COMPLETED FORM, ENSURE THE TOP OF THE WALLS ARE BELOW FINISHED GRADE OF THE TRACK TO ALLOW FOR THE THICKNESS OF THE TRACK SURFACE TO BE INSTALLED.
  - 2.) VERIFY THE PAN HEAD SCREWS SECURING THE INNER WALL SECTIONS ARE INSTALLED WITH THE PAN HEAD EXPOSED.
  - 3.) VERIFY THAT THE 1/2" x 4 1/2" HEX BOLT AND NUT ARE INSTALLED IN THE BASE OF EACH SLEEVE TUBE. SEE DETAIL AT RIGHT.
  - 3.) DURING THE CONCRETE POUR, MONITOR THE DISTANCE BETWEEN THE SIDE WALLS. WALLS MUST REMAIN 12 FEET APART AT ALL POINTS. DEVIATIONS OF MORE THAN 1/4" MAY CAUSE PROBLEMS FITTING PIT COVERS.

GROUND SLEEVE TUBES ARE A PART OF THE FORMS. THEY PROTRUDE 1/2" ABOVE THE POURED WALL SO AS TO BE NEARLY FLUSH WITH THE FINISHED TRACK SURFACE.



VERIFY 1/2" x 4 1/2" HEX BOLT (M2220) & NUT (M2233) ARE INSTALLED IN BASE OF SLEEVES.

**GILL**  
ATHLETICS

CHAMP/PAIGN, IL 800-637-3090

SCALE: (1/20)

DRAWN BY: JWD

DATE: 04/07/08

PART #: F510A  
DWG #: F510A  
F510A SLEEVED  
ASSEMBLED FORM



www.gillathletics.com  
800-637-3090

## STEEPLE CHASE WATER JUMP PVC GROUND SLEEVE BUSHING

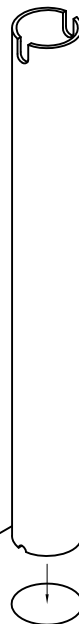
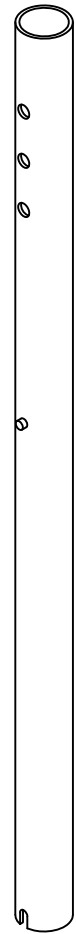
### Instructions for installing Steeplechase lower legs into Water Jump Form ground sleeves.



1. Remove the bolt from the bottom of the PVC ground sleeves provided with the Steeplechase Barrier. Cut an inch off the bottom of the PVC ground sleeves .

Steeple Chase Barrier lower leg

PVC ground sleeve bushing



2. Drop the PVC ground sleeve bushing into the opening of the water jump form ground sleeve. Rotate the bushing so that the slots are parallel with the edge of the water jump.

3. Slowly slide the steeple chase barrier lower leg into the PVC ground sleeve bushing. The slot at the bottom of the leg should index on the bolt at the bottom of the water jump form ground sleeve, and the pin in the leg should nest in the slots in the PVC bushing.

Water jump form  
ground sleeve opening