

Quality • Aesthetics

Safety • Versatility



SportsEdge⁷ PRO Channel Drain System

The SportsEdge® PRO channel drain and turf anchoring system is specifically designed to meet the demands of modern sports construction.



PRO Channel Drains

Today's sophisticated outdoor playing surfaces require proper drainage if they are expected to provide years of service life. SportsEdge PRO components interface with all of the latest track and field surfacing materials and infill turf systems to provide a functional and attractive method for draining, bordering and anchoring synthetic surfaces and natural grass. Typically installed inside the measuring line between the track and field, PRO channel drains can also be used at *bleachers, tennis courts, around stand-alone playing fields, and in asphalt pavement.*

Safety of the athletes is a major concern for owners and it is the number one benefit of SportsEdge PRO. Interchangeable grating and edging is designed to accommodate any combination of adjacent surfaces with minimal elevation change at the transition. Large and dangerous catch basins and drainage swales are replaced by a continuous perimeter drain. This elimination of visual distractions and tripping hazards makes SportsEdge the safest drainage system available.



Quality. SportsEdge PRO drainage channels and catch basins are made from a durable polymer concrete; a blend of high-grade polyester resin and quartz aggregate. Polymer concrete provides physical characteristics far superior to Portland cement concrete. The material is resistant to ultra violet degradation and chemical attack and is impervious to freeze-thaw cycles. Mechanical anchoring ribs keep both products secured in the encasement concrete.



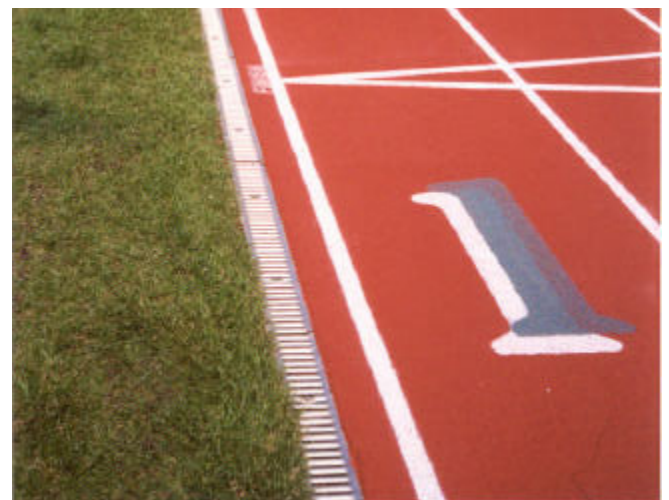
Versatility makes the system easy to use for the designer, owner, and the contractor. One channel drain system is installed for various track surfaces and field conditions. So, even if plans change, SportsEdge PRO is ready to adapt.

Aesthetics are important; and the SportsEdge PRO channel drain system provides the best looking finished product in the industry. The 3 meter "L" edging is staggered during installation on the 1 meter long drain channels, so no channel joints or edges are visible in the finished project.



This also eliminates the need for curved channels at the radius. The end result is cleaner lines with a continuous, unbroken finished appearance.

Performance. The purpose in using the SportsEdge PRO channel drain system is to protect the owner's investment in an expensive track surface, to widen the field of play by eliminating drainage swales and catch basins, and to make the facility playable as soon as possible after a rain event. SportsEdge PRO drainage capacities can be designed to local conditions. Simply include, within the 400 meter layout, the number of SE900 catch basins that will meet or exceed the expected hydraulic load.



PRO Drain / Turf Anchor

SportsEdge PRO is versatile and designed to be used in various artificial turf field applications as a combination turf anchor and drain system. The ideal application is a track with a carpeted field used for football, soccer, lacrosse, etc.

Pro Drain and Turf Anchors replace the need for traditional concrete curbs and embedded wood nailers with an easy to use, precast tuck slot module. The brackets and edging provide a termination strip and clean edge detail to separate the artificial turf from a wide range of adjacent materials.

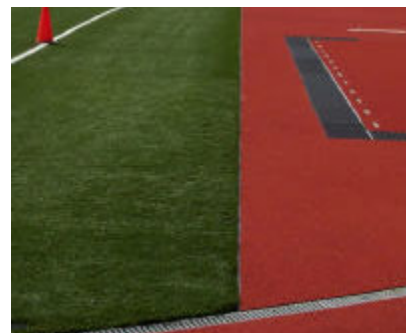
Use SportsEdge combination **Drain & Turf Anchor** when turf is installed next to track material, natural grass, asphalt, concrete...even the skinned infield of a baseball diamond.

Use **SportsEdge Turf Anchor** when a drainage system is not required but a clean, safe edge detail is. Applications may include the area behind the football end zone or "D" zone, bordering soccer fields, baseball fields, etc. The end result is only a (.5)1/2" FPVC edge visible, with little or no elevation changes. The range of turf anchor sizes will accept the entire spectrum of traditional knitted and infill type carpets. This innovative and universal anchoring system improves the appearance and safety of any artificial turf field by concealing non-resilient materials and creating a minimal elevation change between surfaces. In addition, with PRO turf anchors, carpet can be removed or replaced without disturbing the surrounding medium.

SportsEdge PRO Channel Drain with #SE437 Grate.



SportsEdge PRO Drain in an Infill Turf Application



SportsEdge Turf Anchor: Safer, Cleaner Edge Detail.



Technical Data

Polymer concrete components are manufactured from select quartz aggregate and inert mineral fillers bonded together with high-grade thermoset polyester resin creating products of superior strength, chemical resistance, and durability.

Polymer concrete allows almost no absorption, thus is resistant to freeze thaw cycles which spalls regular concrete, and is also highly UV resistant. These properties make it an ideal material for any external environmental conditions worldwide.

Because the properties of polymer concrete are very similar to that of Portland cement, the thermal expansion coefficients are almost equal. This low thermal expansion differential eliminates the failures that other trench drain liner materials can experience such as cracking during cold temperatures, or growing out of the surrounding concrete during hot temperatures. Its strength, chemical resistance, low permeability, and non-absorbing properties have made it the preferred material to capture surface drainage in exterior applications.

	PRO Channel	324 Turf Anchor
Compressive strength (min.)	80 mpa (12,000 psi)	
Tensile strength (min.)	10 mpa (1,200 psi)	
Bending strength (min.)	20 mpa (2,000 psi)	
Coeff. of thermal expansion	0.25 x 10-6 in/in/ft	
Absorption	<0.2%	
Freeze-thaw	1600 cycles - no weight loss	
Length	1000 mm (39.19 in)	
Overall width	150 mm (6.0 in)	51 mm (2.0 in)
Inside width	100 mm (4.0 in)	16 mm (0.625 in)
Overall depth	217 mm (8.5 in)	80 mm (3.2 in) - 105 mm (4.1 in)
Weight	18.2 kg (40 lbs)	6.0 kg (13.2 lbs) - 7.0 kg (15.4 lbs)

SportsEdge PRO drainage channels feature a bottom radius, smooth interior surface, interlocking tongue and groove ends and the patented “Red Dot®” grate locking system. Grooves in the top edge of the channel retain the barbed bottom of the edging.

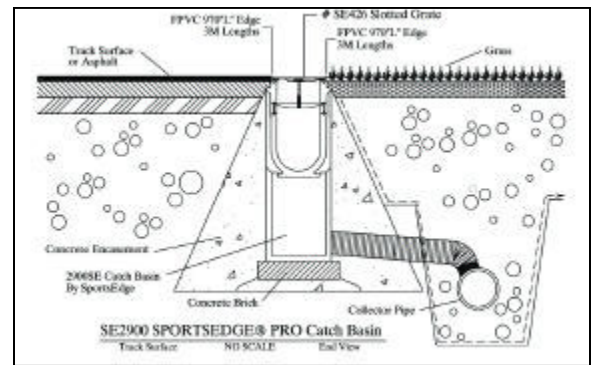
Turf Anchors feature a clip together alignment system, a 0.625” tuck slot for artificial turf, and a retention groove for the “D” edging. Mechanical anchoring ribs keep both products secured in the encasement concrete.

Channel Drain Catch Basin



SE900 Catch Basin

Half meter long SE900 catch basins can be located anywhere to facilitate storm drain connections. A typical 400 meter track will include a minimum of 8 catch basins. The in-line basins are the same width as the channels so they blend seamlessly into the layout. Removable galvanized steel trash buckets can also be specified for debris interception. Catch basins can accommodate up to a 12” CMP, HDPE or PVC pipe.



Typical Collector Pipe Connection



2903 Trash Bucket

Channel Drain Grates



426 Grate

Galvanized steel slotted drainage grates are available in one meter and half meter lengths. The polypropylene grates are a herringbone pattern, black in color, have UV stabilizers, and are available in half meter lengths. This grate meets heel proof and ADA requirements. All grates lock securely to the channel with a hands-free locking device consisting of a bolt and toggle bar.



424 Grate



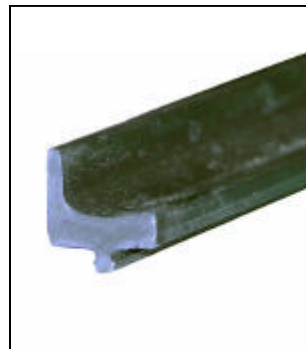
437 Grate

Grate Specifications

Part #	Material	Length mm (in.)	Weight kg (lbs.)	Locking Device	Edge
424	Galvanized Steel	1000 (39.19)	3.6 (8.0)	811	L
425	Galvanized Steel	500 (19.60)	1.8 (4.0)	811	L
426	Galvanized Steel	1000 (39.19)	2.7 (6.0)	811	L
427	Galvanized Steel	500 (19.60)	1.4 (3.0)	811	L
437	Polypropylene	500 (19.60)	.35 (.78)	810	L

Channel & Turf Anchor Edges

Edges are manufactured from a flexible polyvinyl chloride (FPVC) compound enhanced with UV stabilizers. "L" edges are 13mm (0.5") tall to provide a guide edge for a non-porous track surface. Three meter edging lengths give the drain system a clean, continuous appearance in the finished installation.



"L" Edging



"D" Edging

Channel Drain End Plates, Outlets & Accessories



2206



2209

The closed end plate terminates open channel runs. Four inch (4") or six inch (6") outlet end plates are used for direct channel discharge when required. The XTPC is used to transition from PRO Channel Drain to XT Slot Drain in the radius or high jump area.



XTPC



2208.4



2231 Shovel Head



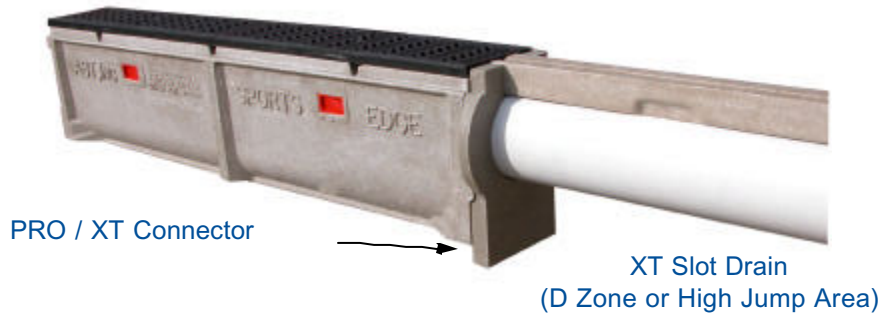
2811A Locking Device



2810A Locking Device

PRO Channel Drain w/ XT Slot Drain

PRO Channel Drain
w/ 437 Grate



PRO / XT Connector

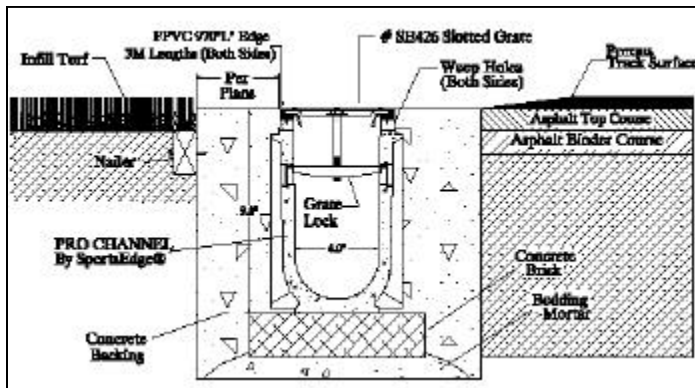
XT Slot Drain
(D Zone or High Jump Area)

Track / Artificial Turf Applications:

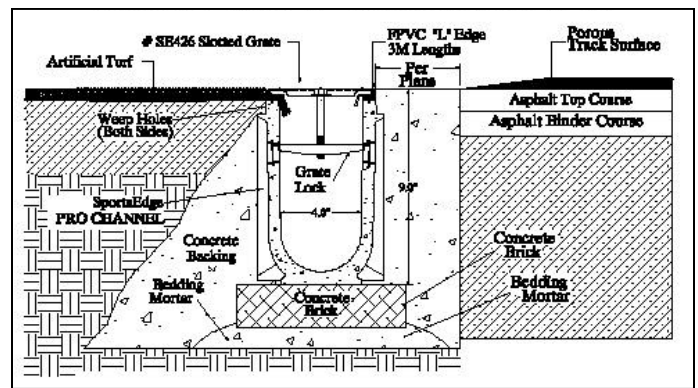
SportsEdge offers many options and details for the interface between the drain system, track surface, and the various artificial turf systems. In these applications the SportsEdge channels serve both as the drain system edge detail, and the turf anchor. Additional CAD details and specifications are available. Please call or contact us for more information or technical assistance.

800-334-6057 or info@sportsedge.com

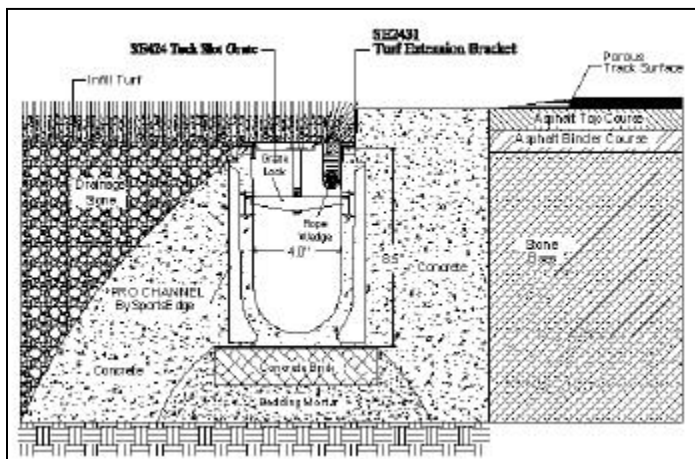
System Details - PRO Channel Drains / Artificial Turf



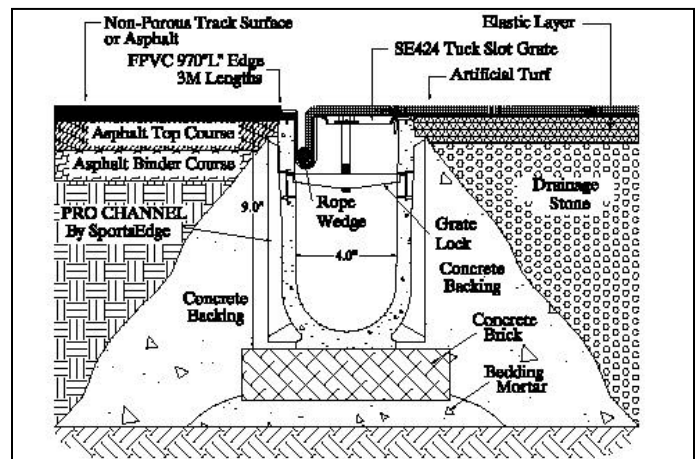
SE426 Grate w/ Infill Turf & Nailer



SE426 Grate w/ 1/2" Artificial Turf



SE424 Tuck Slot Grate & SE2431
Infill Turf Extension Bracket

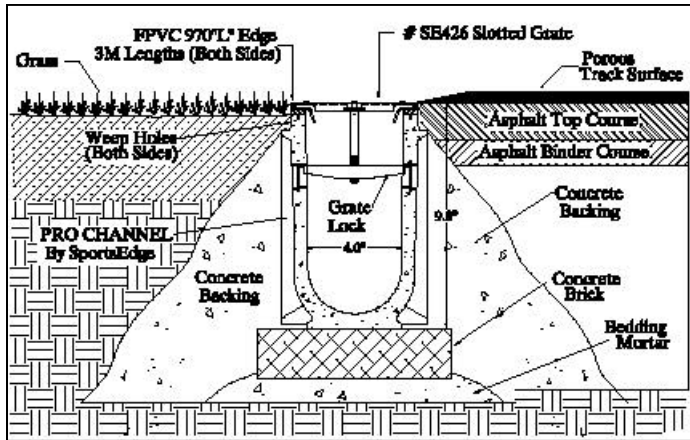


SE424 Tuck Slot Grate w/ 1/2" Artificial Turf

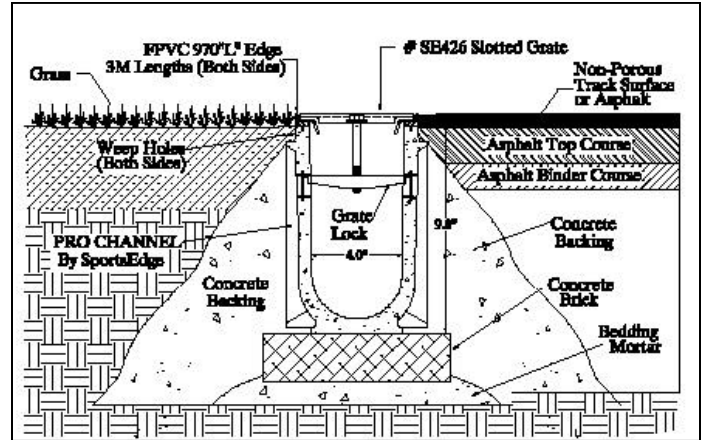
PRO Channel Drain Details-

Track/Grass Field Applications

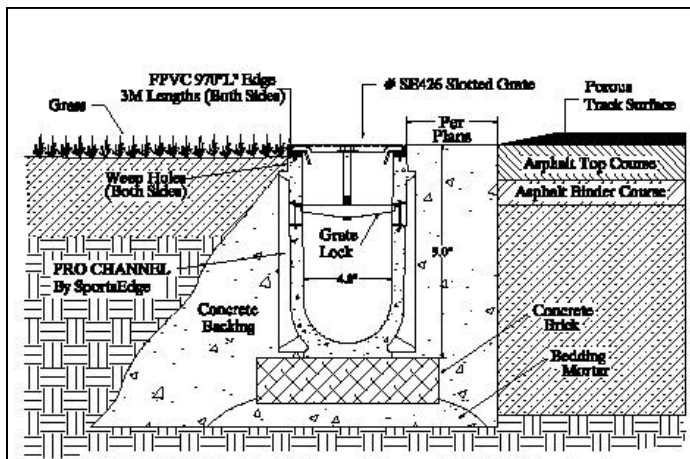
Various details are also available for SportsEdge PRO channel drain in track & grass field applications. The detail can vary depending on the porosity of the track surface and concrete encasement details.



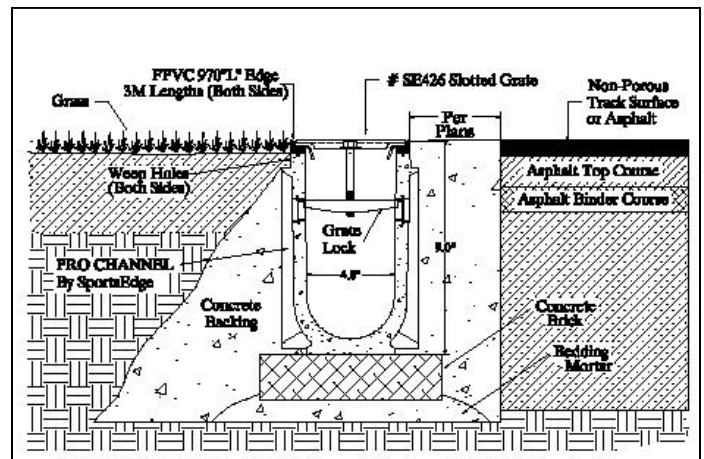
SE426 Grate - No Curb
Porous Track



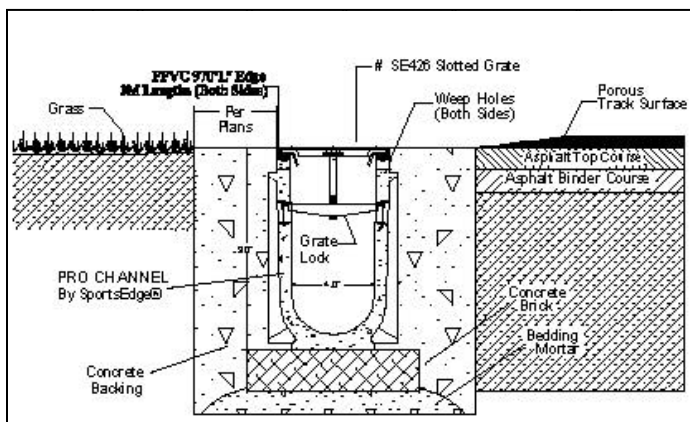
SE426 Grate - No Curb
Non-Porous Track



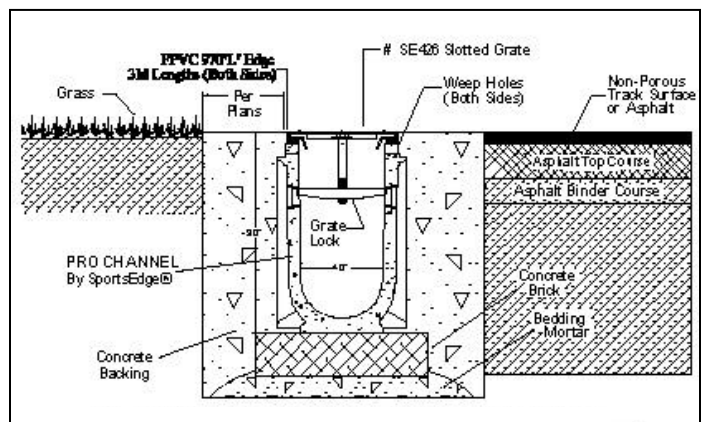
SE426 Grate - 1 Side Curb
Porous Track



SE426 Grate - 1 Side Curb
Non-Porous Track



SE426 Grate - 2 Side Curb
Porous Track



SE426 Grate - 2 Side Curb
Non-Porous Track

PRO Turf Anchor

System Details - Turf Anchors



SE324
Components Required
 324 Turf Anchor (Select height)
 970D Edge
 Installation Bracket



970D Edge

Made of polyvinyl chloride, the 970D is 13 mm (0.5") tall and 18 mm (0.7") wide. A barb on the bottom surface locates the "D" edge into the groove in the top surface of the anchor. The edge is glued to the turf anchor prior to concrete placement. This creates a resilient and safe termination strip between the adjacent surface materials.

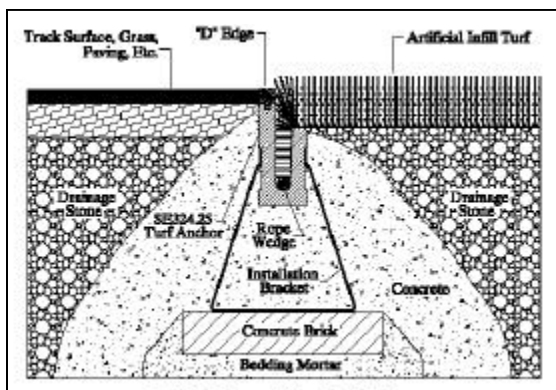


230 Installation Bracket

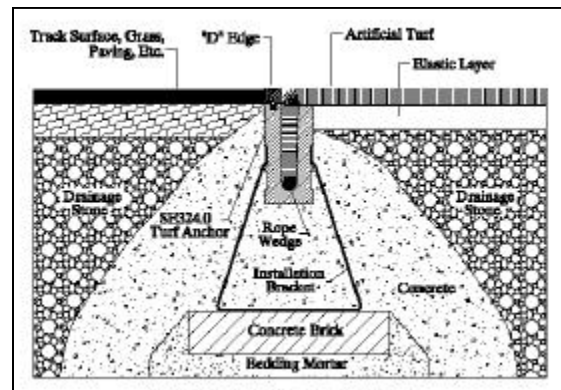


SE324.25

The galvanized, spring steel installation bracket joins two adjacent anchors, holding them in longitudinal alignment. The wide base of the bracket provides stability during concrete placement. Depending on the elevation of your sub-grade and the anchor style used, insert the bracket into the appropriate set of grooves so that the top of the system is at finished grade. The bracket is used effectively when sub-grade is cut anywhere between 10 -14" below finished elevation.



SE324.25 Artificial Infill Turf



SE324.0 1/2" Artificial Turf

The 25 mm bi-level feature of the SE324.25, together with the 13 mm (0.5") height of the 970D edge creates a 38 mm (1.5") shelf to contain turf infill material within the field. The top of the 970D edge is level with the top of the infill for a safe transition between surfaces.

Use the SE324.0 when a standard 1/2" carpet is adjacent to any surface material. The 970D edge serves as a termination strip, cleanly and safely separating the two surfaces. The 13 mm (0.5") height provides a convenient screed edge for synthetic running track surfaces.



SportsEdge® a Division of ABT, Inc.
 P.O. Box 837 / 259 Murdock Rd.
 Troutman, NC 28166
 Toll Free: 800-334-6057
 Fax: 704-528-0179
info@sportsedge.com

Member:



DISCLAIMER

The customer and the customer's architects, engineers, consultants, and other professionals are completely responsible for the selection, installation, and maintenance of any product purchased from ABT, and EXCEPT AS EXPRESSLY PROVIDED IN ABT'S STANDARD WARRANTIES, ABT MAKES NO WARRANTY, EXPRESSED OR IMPLIED, AS TO THE SUITABILITY, DESIGN, MERCHANTABILITY, OR FITNESS OF THE PRODUCT FOR CUSTOMER'S APPLICATION. Copies of ABT's standard warranties are available upon request. Trench Former7 is a registered trademark of ABT, Inc.