

SPECIFICATIONS

The 442 High School Aluminum Take-off Board Tray is designed to hold the 441 take-off board which is purchased separately. The tray assembly is fabricated from 3/16" thick 6061-T6

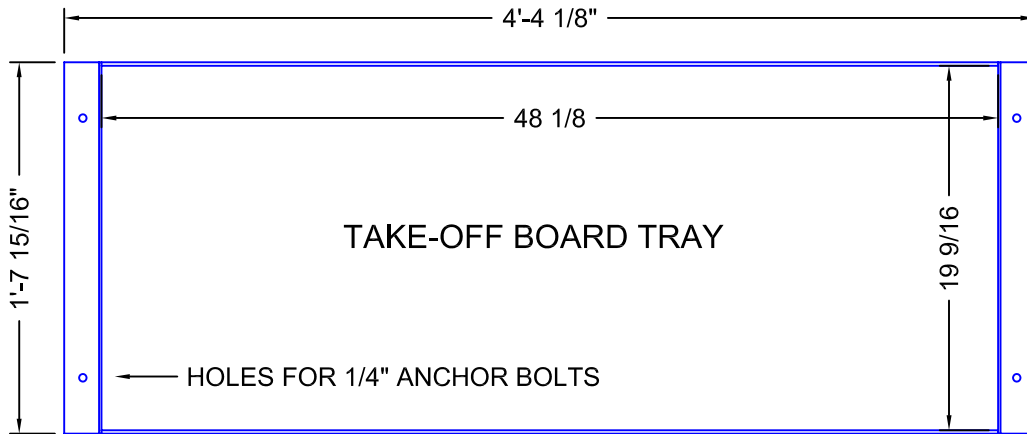
aluminum sheet and angle which is formed and securely welded together. The take-off tray is incorporated into the runway and holds the take-off board flush with the runway surface.



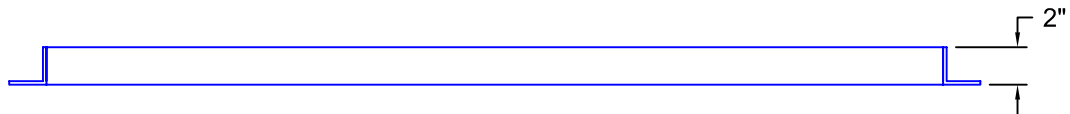
SPECIFICATIONS

The 442 High School Aluminum Take-off Board Tray is designed to hold the 441 take-off board which is purchased separately. The tray assembly is fabricated from 3/16" thick 6061-T6

aluminum sheet and angle which is formed and securely welded together. The take-off tray is incorporated into the runway and holds the take-off board flush with the runway surface.



PLAN VIEW

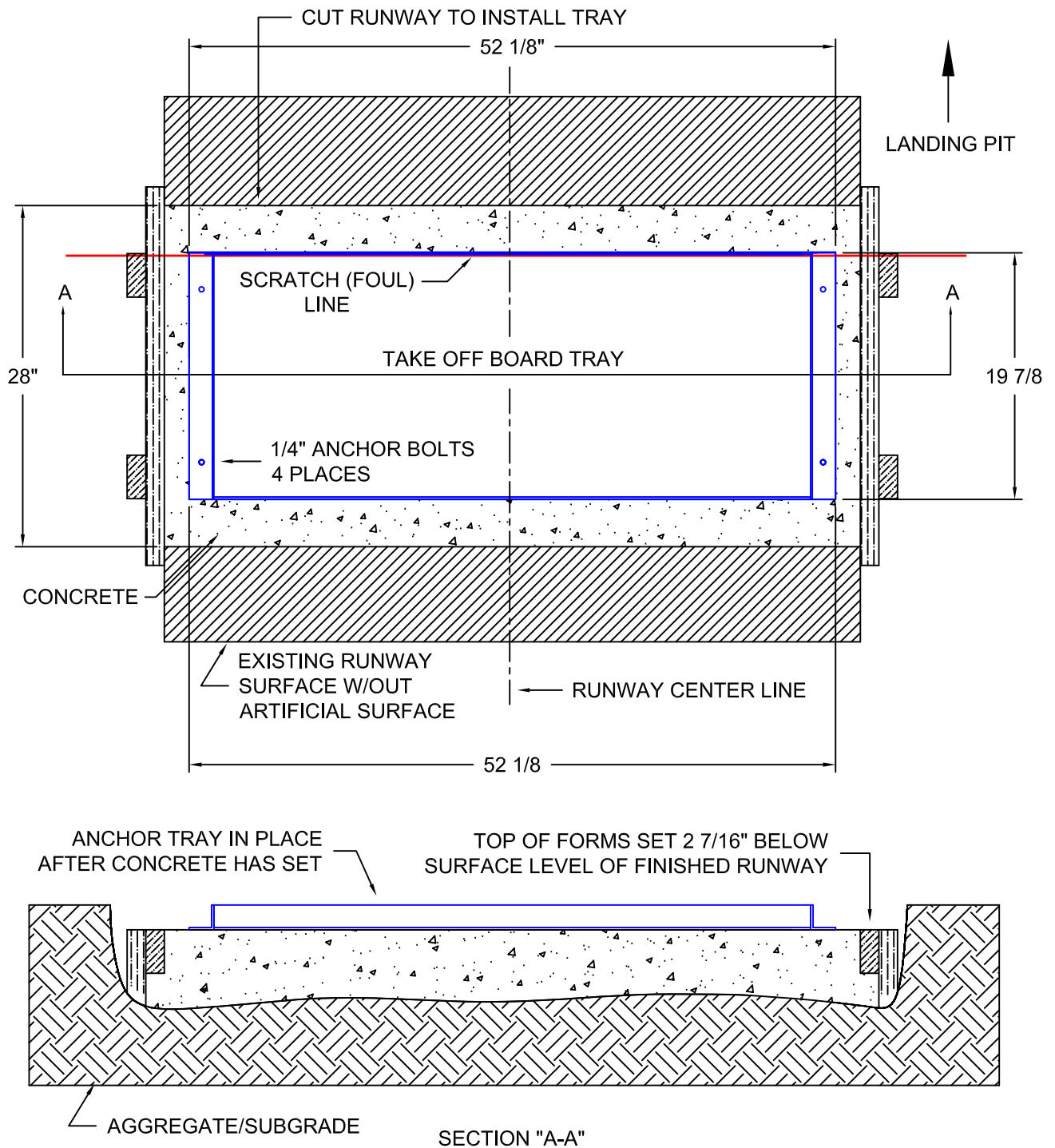


SIDE VIEW



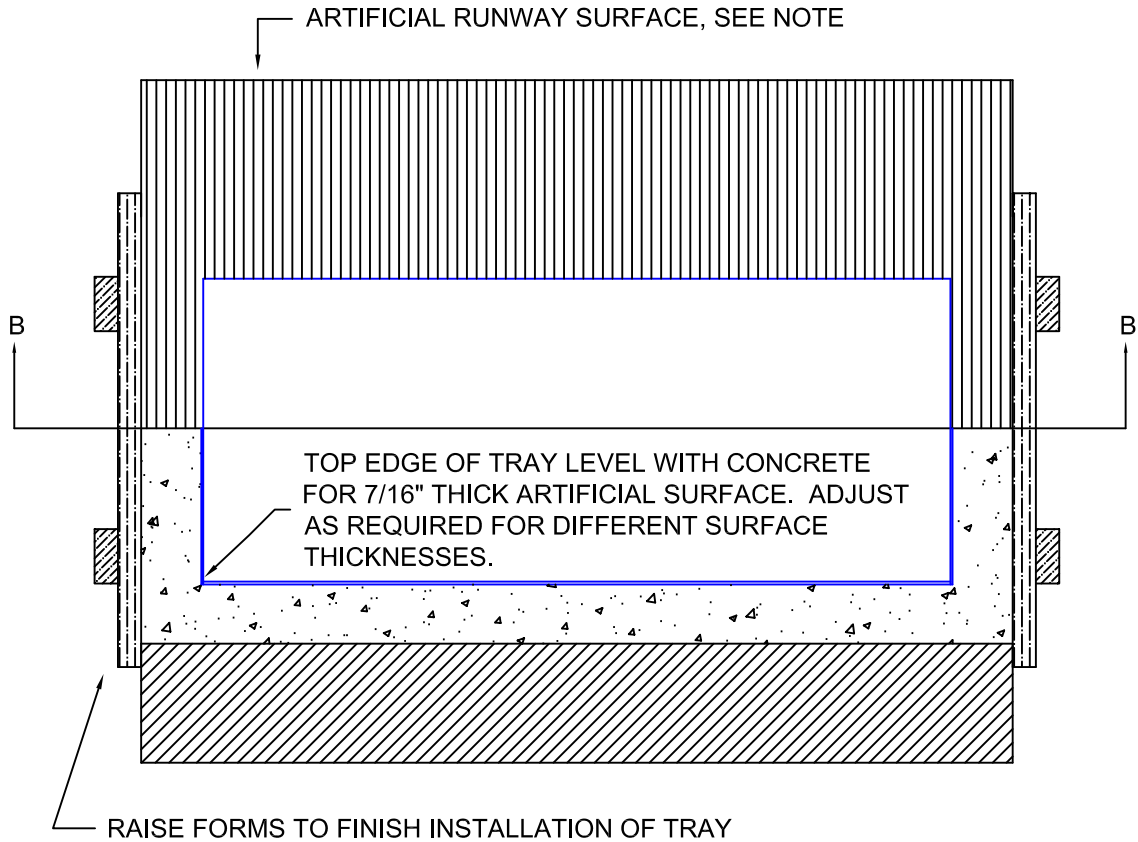
CUTAWAY SHOWN WITH 441 BOARD

INSTALLING 442 TRAY ON A RECESSED CONCRETE PAD



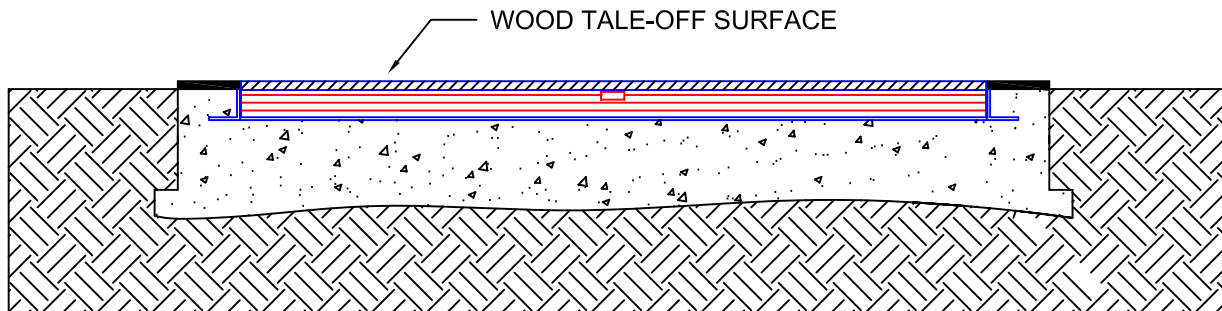
NOTICE: All installations should be done by experienced contractors and in accord with all applicable codes, laws and regulations. Suggested installation instructions herein are illustrative only and should be adapted to suit local requirements. Gill Athletics is not responsible for the manner in which these products are installed.

FINISHING INSTALLATION



NOTE:

1. Artificial runway surface should be trimmed even with the inside edge of the tray.
2. If tray is installed in an asphalt runway without an artificial surface, the top edge of the tray should be 7/16" below the asphalt runway.



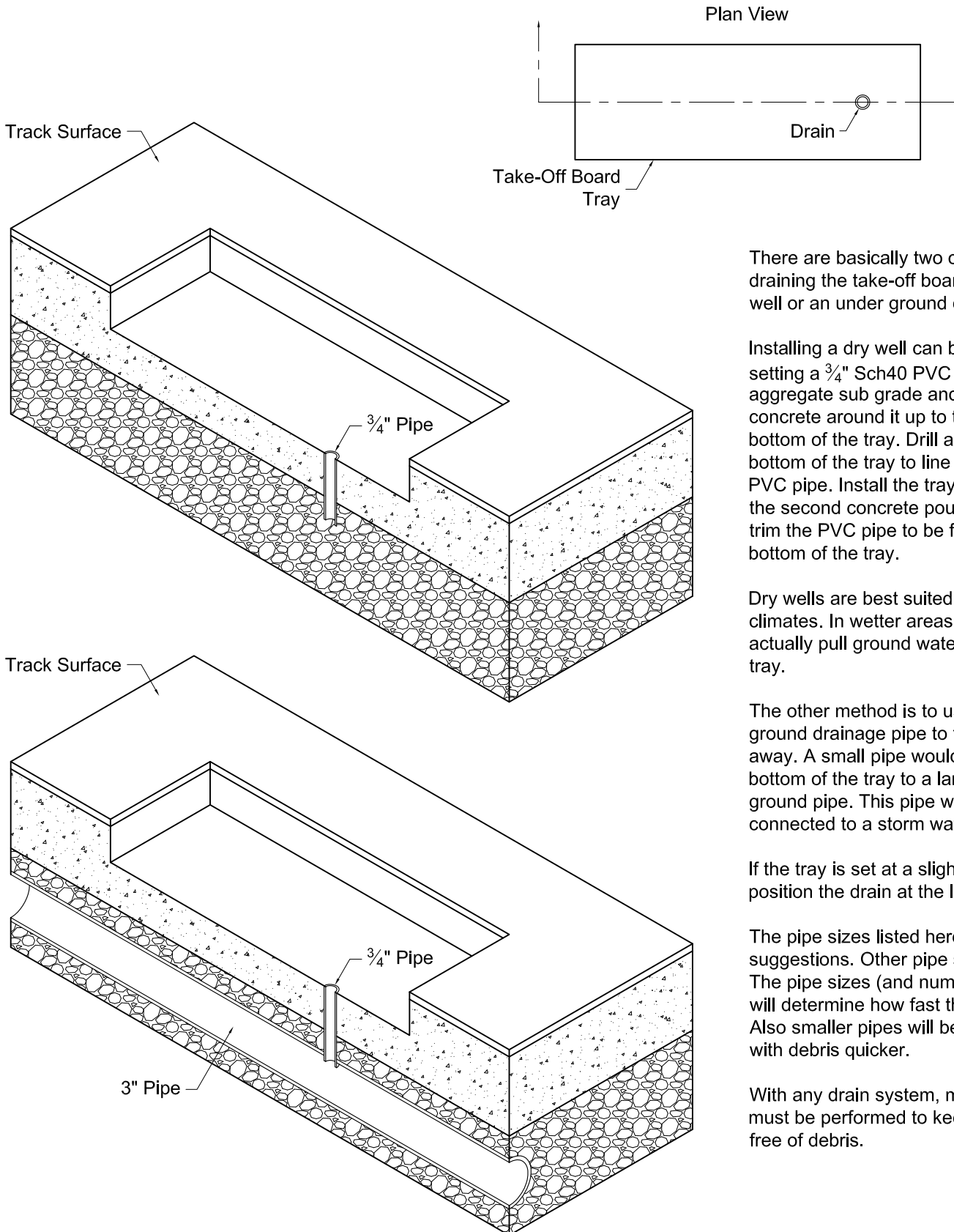
SECTION "B-B"

INSTALLATION FINISHED WITH GILL 441 TAKE-OFF BOARD INSTALLED



www.gillathletics.com
800-637-3090

LJ & TJ TAKE-OFF BOARD TRAYS DRAINAGE



There are basically two options for draining the take-off board tray; a dry well or an under ground drainage pipe.

Installing a dry well can be as simple as setting a $\frac{3}{4}$ " Sch40 PVC pipe in the aggregate sub grade and pouring concrete around it up to the level of the bottom of the tray. Drill a hole in the bottom of the tray to line up with the PVC pipe. Install the tray and complete the second concrete pour. If need be, trim the PVC pipe to be flush with the bottom of the tray.

Dry wells are best suited for dry climates. In wetter areas a dry well may actually pull ground water up into the tray.

The other method is to use an under ground drainage pipe to take the water away. A small pipe would lead from the bottom of the tray to a larger under ground pipe. This pipe would be connected to a storm water system.

If the tray is set at a slight inclination, position the drain at the low end.

The pipe sizes listed here are just suggestions. Other pipe sizes will work. The pipe sizes (and number of drains) will determine how fast the tray drains. Also smaller pipes will become clogged with debris quicker.

With any drain system, maintenance must be performed to keep the drains free of debris.