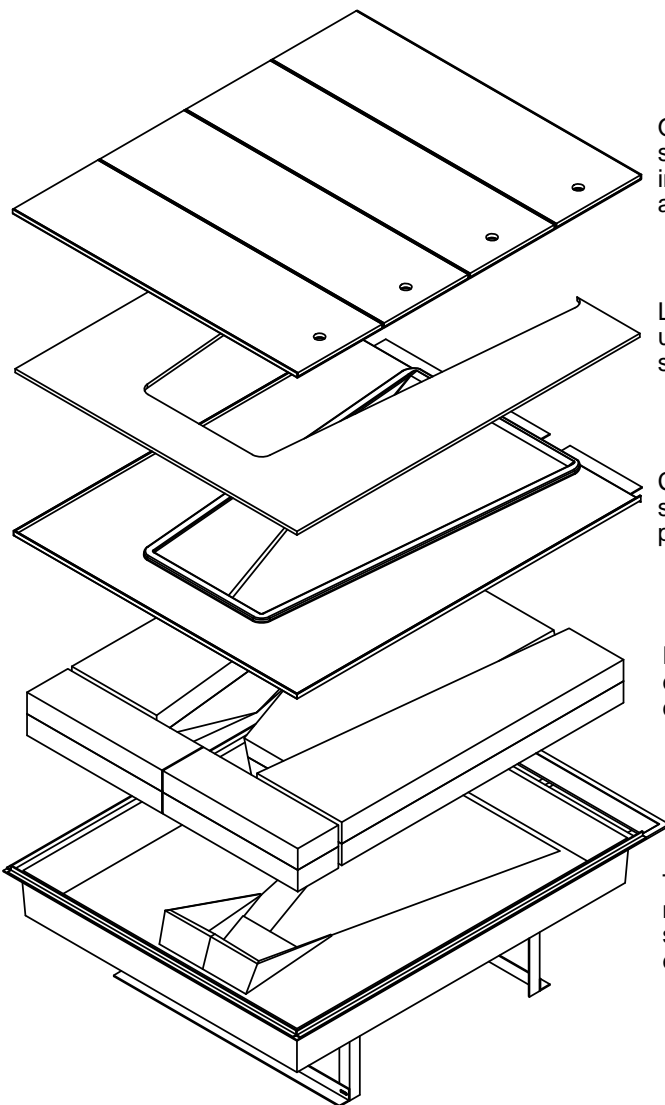




www.gillathletics.com  
800-637-3090

## 507 - SKYDEX SOFT VAULT BOX SPECIFICATIONS

The 507 Skydex™ Soft Vault Box cover is made of thermoformed white HMWPE 1/8" sheet. The tray is made from 1/8" molded fiberglass with a white gel coated interior. The cover is designed to be filled with track surface so the area around the box will match the color of your track surface while maintaining the added safety of the Skydex Soft box. The tray is filled with patented Skydex™ material that offers enhanced safety with no effect on the vaulter's experience. The back of the box is reinforced by steel pieces molded into the fiberglass tray. An optional blanking lid can be installed when the box is not in use allowing the box location to be very versatile. Because of the added protection of the Skydex material, a vault box collar is not needed. The safest box on the market has just become the most versatile. This box is IAAF certified.



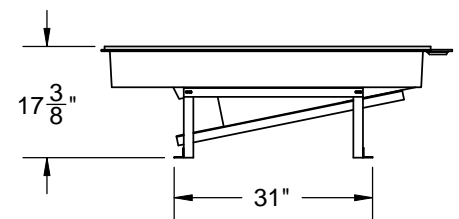
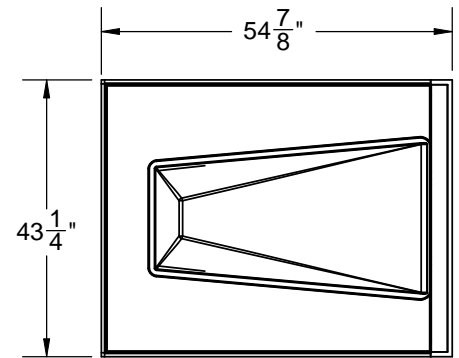
Optional Blanking lid - 1/8" metal sheet with user's track surface installed. Useful for field house applications.

Lid track surface - installed by user to match surrounding surface.

Cover - 1/8" HMWPE molded sheet. Holds lid track surface in place.

Patented Skydex material eliminates the need for a box collar.

Tray with support structure - molded fiberglass with steel supports. Improved stability for easier installation.





www.gillathletics.com  
800-637-3090

## 507 - SKYDEX SOFT VAULT BOX INSTALLATION INSTRUCTIONS

The following instructions are for installing a 507 Skydex™ Soft Vault Box in a new or existing vault pad or runway.

**IT IS IMPORTANT TO READ ALL INSTRUCTIONS BEFORE BEGINNING INSTALLATION.**

**NOTICE:** All installations should be conducted by experienced contractors and in accordance with all applicable codes, laws and regulations. Suggested instructions herein are illustrative only and should be adapted to suit local requirements. Gill Athletics is not responsible for the manner in which this product is installed.

If you have any questions, please consult Gill Athletics at 800-637-3090.



- Do not twist or deform the fiberglass bottom tray during installation.
- The Skydex™ Soft Box should be installed so that the top edge is flush with the final track surface elevation. See page 6 for more information.
- The front or leading edge of the cover must not be higher than the finished track surface.
- An optional drainage hole may be put into the box if site conditions permit. See page 3 for more information.
- An optional flush mount lid may be purchased for installation when the box is not in use. Even with the use of this flush cover Gill Athletics, Inc, does not recommend installing this box in competition court areas.



www.gillathletics.com  
800-637-3090

## 507 - SKYDEX SOFT VAULT BOX DRAINAGE OPTIONS

### When to use a tray drain:

- The installation site has a low water table
- There is a secure, dedicated drainage system on site that a tray drain can be connected to
- The proper site preparations have been made

Even when the site meets the necessary conditions, it is still possible that the drain may clog or back up due to excess debris or age.

If the site is eligible for a drain, a 1/2" drain hole may be drilled in the bottom center section of the fiberglass tray, as shown below. If a drainage system is present on site, a tube can connect the hole in the tray to the installed drainage system, as shown in image 1. If a drainage system is not present at the site, sand/stone/gravel can be piled up around the hole in the tray, as shown in image 2. Both setups allow water to drain from the tray if it collects there after the concrete is poured.

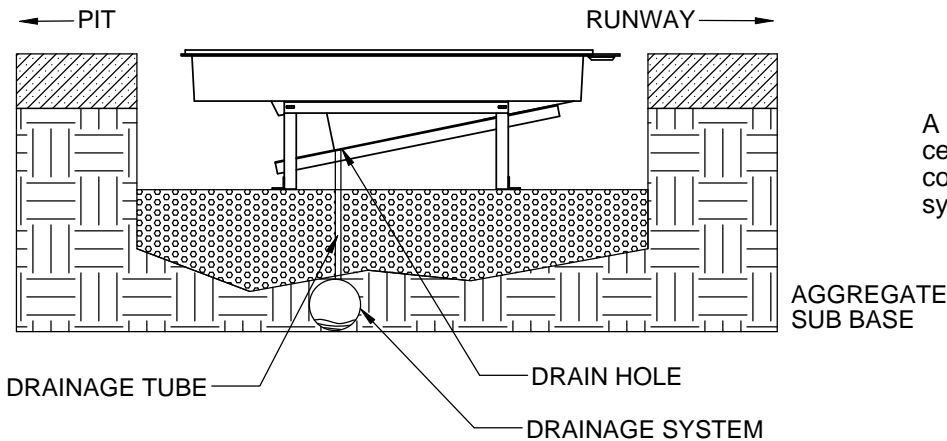
### When NOT to use a tray drain:

- The installation site has a high water table
- There is no installed drainage system for the area
- The proper site preparations have not been made

If a drain is installed in a site that does not meet the necessary conditions, it will not empty water from the box. Instead, high ground water will back up into the tray through the drain.

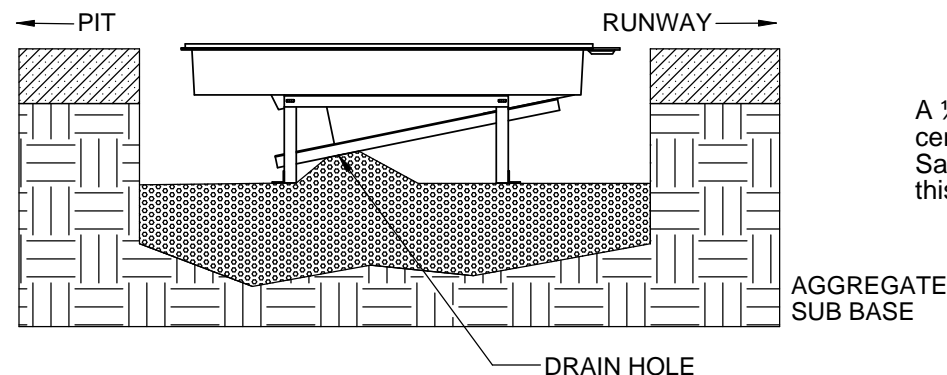
Box drains are **NOT** recommended.

IMAGE 1



A 1/2" drain hole may be drilled in the bottom center section of the fiberglass tray. It can be connected by a tube to the site drainage system.

IMAGE 2

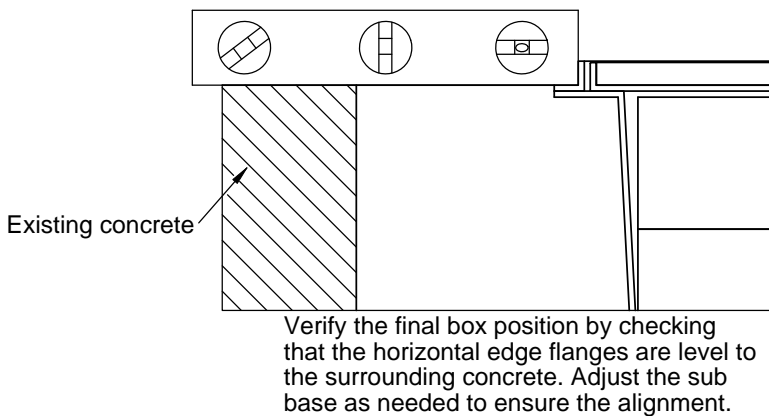
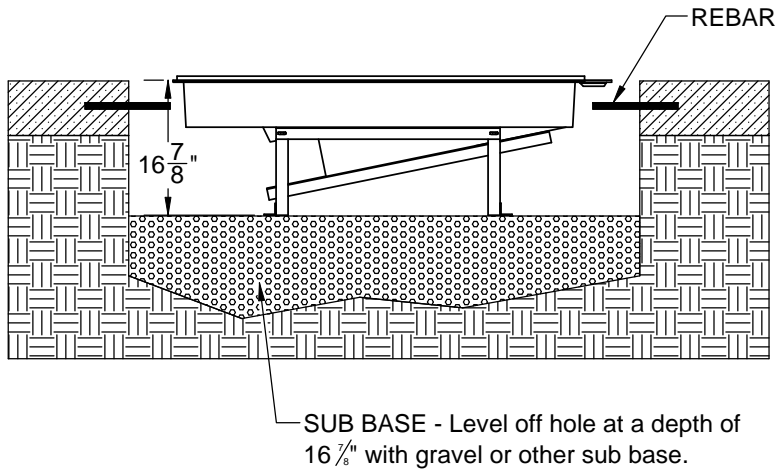


A 1/2" drain hole may be drilled in the bottom center section of the fiberglass tray. Sand/stone/gravel should be piled up around this area so the tray can drain into the ground.



www.gillathletics.com  
800-637-3090

## 507 - SKYDEX SOFT VAULT BOX INSTALLATION INSTRUCTIONS



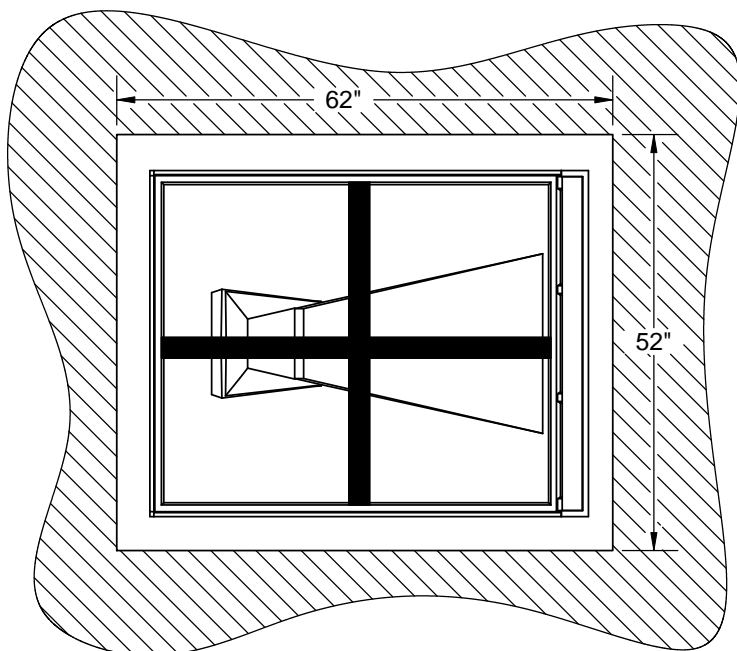
### SITE PREPARATION

Installer/contractor must locate the vault box in accordance with plans and specifications. It is recommended that an area be prepared no smaller than 52" x 62" and 18" deep. It is suggested that the bottom of the hole is below the frost line. Short lengths of rebar should be installed to tie the box pour to the existing concrete pad. The installed, fully assembled vault box must be level, square and correctly positioned with respect to the track layout plans. The installer/contractor shall abide by any local ordinance or specifications with regards to substructures or underlayment.

### FINAL POSITIONING

Level the horizontal rim of the box with the surrounding concrete pad. The vertical edge will stick up above the concrete, but will be even with the finished track surface (12mm thickness) once installed. The front of the cover should be even with the track surface so that there is no lip for the vaulting pole to get caught on. If the vault box is installed at the correct level, the vertical edge of the tray will be flush with the top of the finished track surface.

Ensure the tray is level in all directions and parallel and on center with the runway center line, then mark the position with string lines. Periodically check the box position during the concrete pour to ensure it hasn't moved out of position.



### BOX PREPARATION

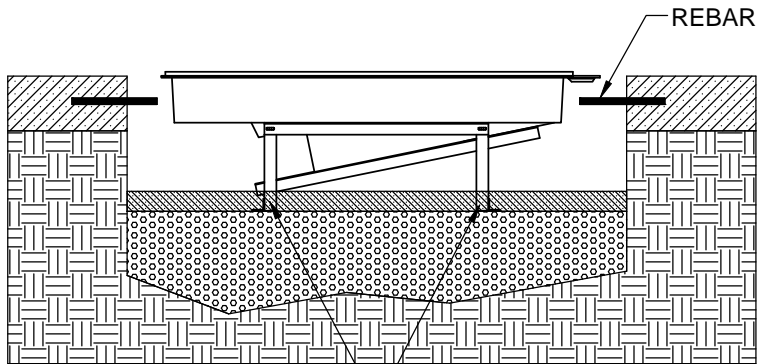
The 507 Skydex™ Soft Vault Box comes assembled. The installer/contractor will need to remove the cover and Skydex material from the tray. These pieces should be stored in a safe place until they are ready to be reinstalled into the tray.

After emptying the tray, cut two 2"x4" cross braces to fit just inside the box as shown. These braces support the tray sides during the concrete pour.

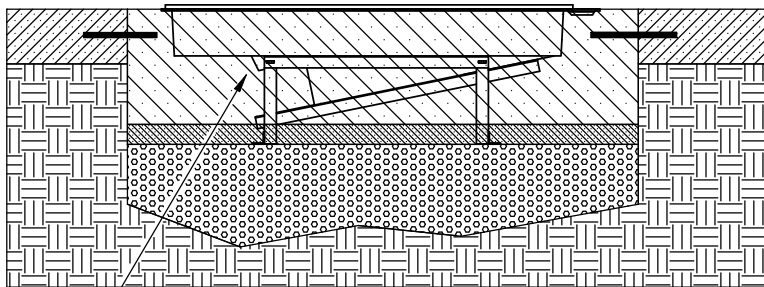


www.gillathletics.com  
800-637-3090

## 507 - SKYDEX SOFT VAULT BOX INSTALLATION INSTRUCTIONS



TWO POURS - It is best to pour the concrete in two sessions:  
1 - cover the feet to secure the box in place.  
2 - fill the rest of the hole.



CRITICAL AREA - Must have no air pockets. Concrete must fill against this back sloped surface.

### CONCRETE POURING

It is recommended to do the concrete in two pours if possible. The first pour should just cover the cradle feet. Once this is dry then finish pouring the concrete until it is level with the horizontal edge flange. Thoroughly vibrate the concrete during the pour to minimize voids. It is critical that there is solid concrete under the tray because that will be the back of the vault box when fully assembled.

Before and during the concrete pour, check the tray position; if it has moved off of the string lines, reposition it to the correct placement.

If using only one concrete pour, additional weight will be needed to hold the tray down. The tray can be filled with water and/or weights. Internal cross braces are not to be removed until concrete has completely set.

When smoothing the concrete around the edge of the tray, level the concrete out with the horizontal flange of the box.

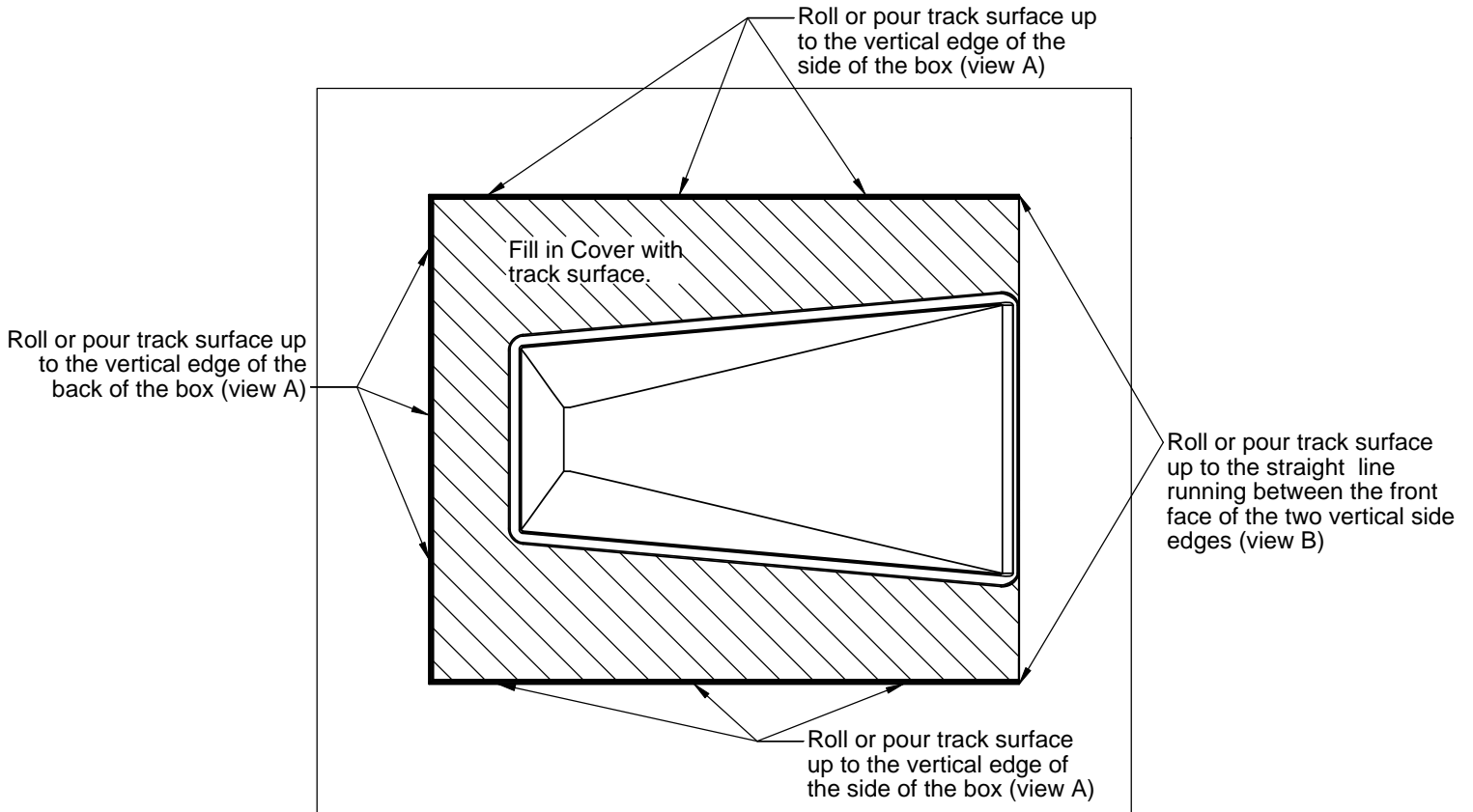
Once the concrete is initially set, weights and positional support boards can be removed.

When concrete has completely cured, remove the internal cross braces and any water if used. Clean up the inside of the tray and along the top of the tray lip to prepare for surfacing and reassembly.



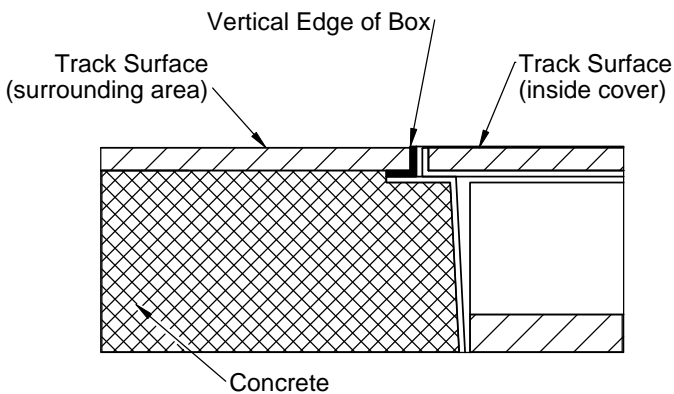
www.gillathletics.com  
800-637-3090

# 507 - SKYDEX SOFT VAULT BOX SURFACING INSTRUCTIONS



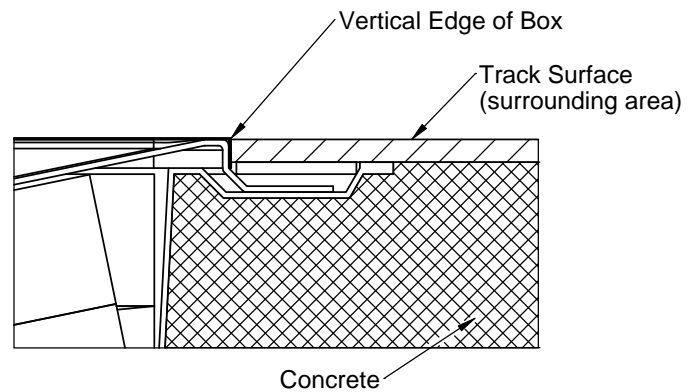
**COVER:** Pour or roll out track surface onto cover to complete surfacing.

**VIEW A**



**BACK AND SIDE EDGES:** Pour or roll out track surface up to the vertical edge of the box.

**VIEW B**



**FRONT EDGE:** Cut or pour the track surface up to the front of the cover. It should be in line with the front of the vertical edge of the tray.