

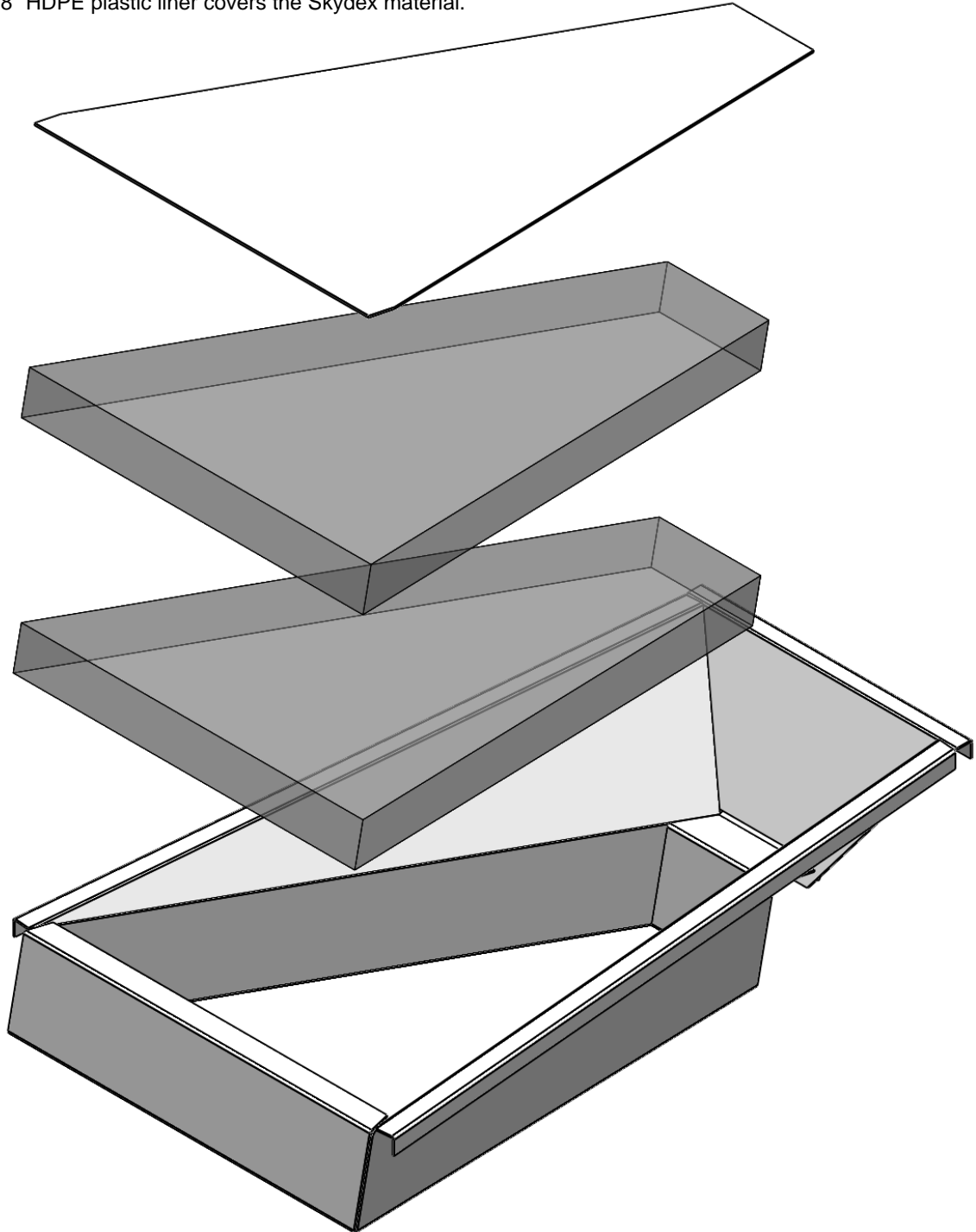


www.gillathletics.com  
800-637-3090

## 508 - SAFETY-MAX POLE VAULT BOX SPECIFICATIONS

The 508 SafetyMAX pole vault box is composed of three parts.

- The tray is fabricated out of 12 ga steel sheet metal and given a durable white powder coat finish.
- The cushioning element is composed of two layers of Skydex material to minimize injuries resulting from vaulters landing in the box.
- A 1/8" HDPE plastic liner covers the Skydex material.

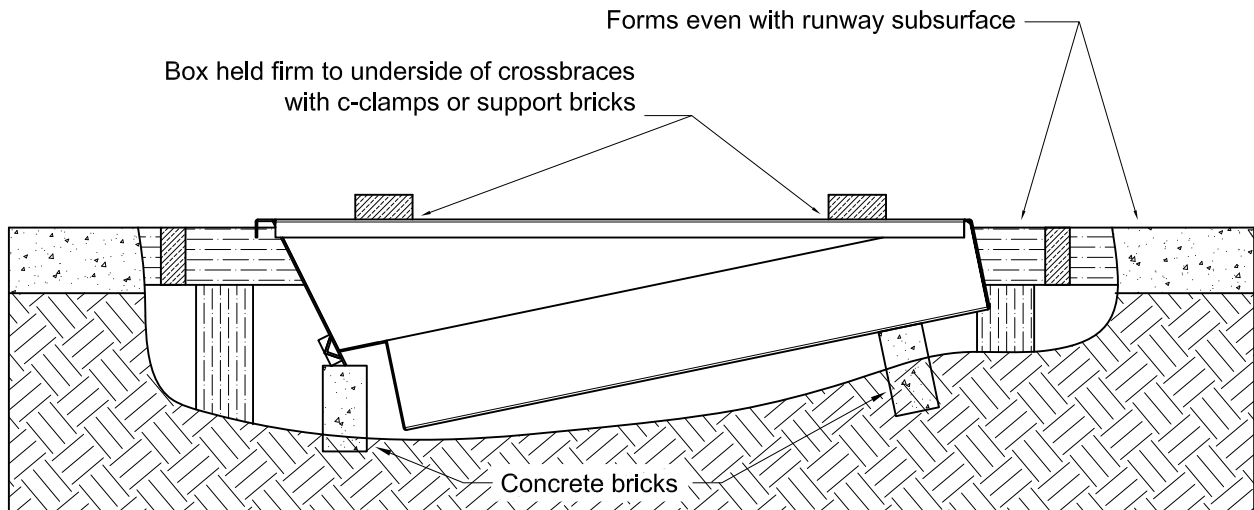
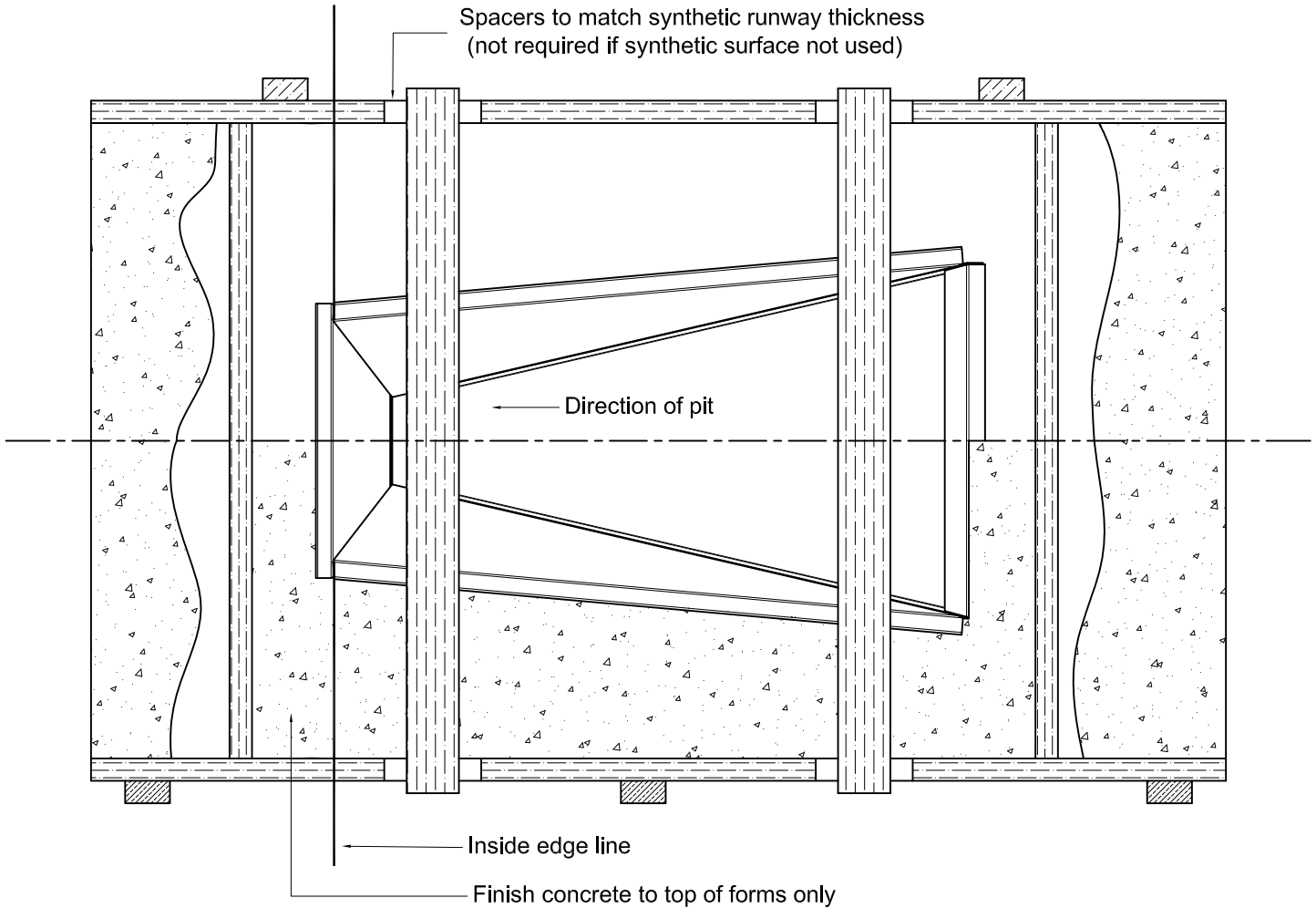




www.gillathletics.com  
800-637-3090

# 508 SAFETYMAX POLE VAULT BOX INSTALLATION INSTRUCTIONS

## INSTALLATION OF BOX IN NEW OR EXISTING RUNWAY



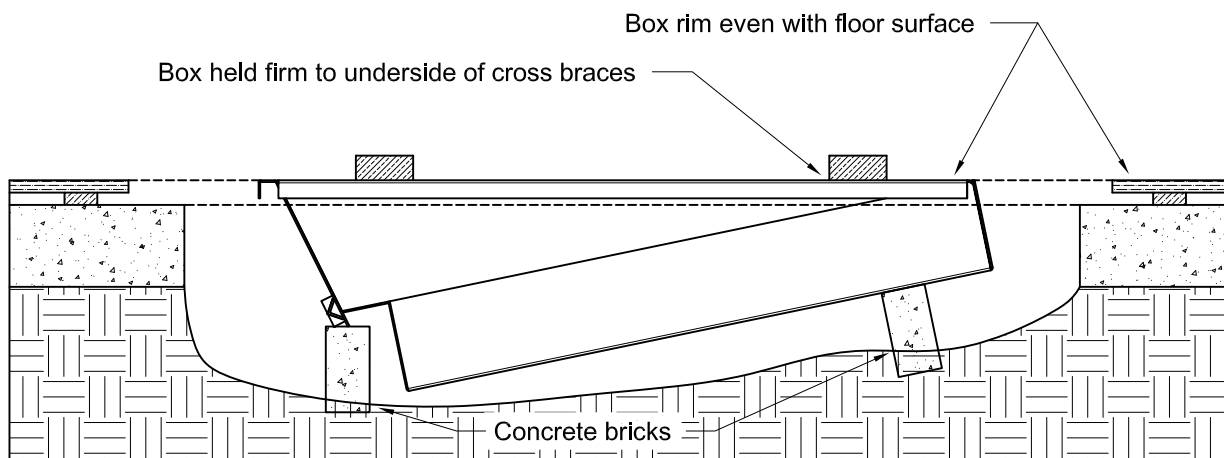
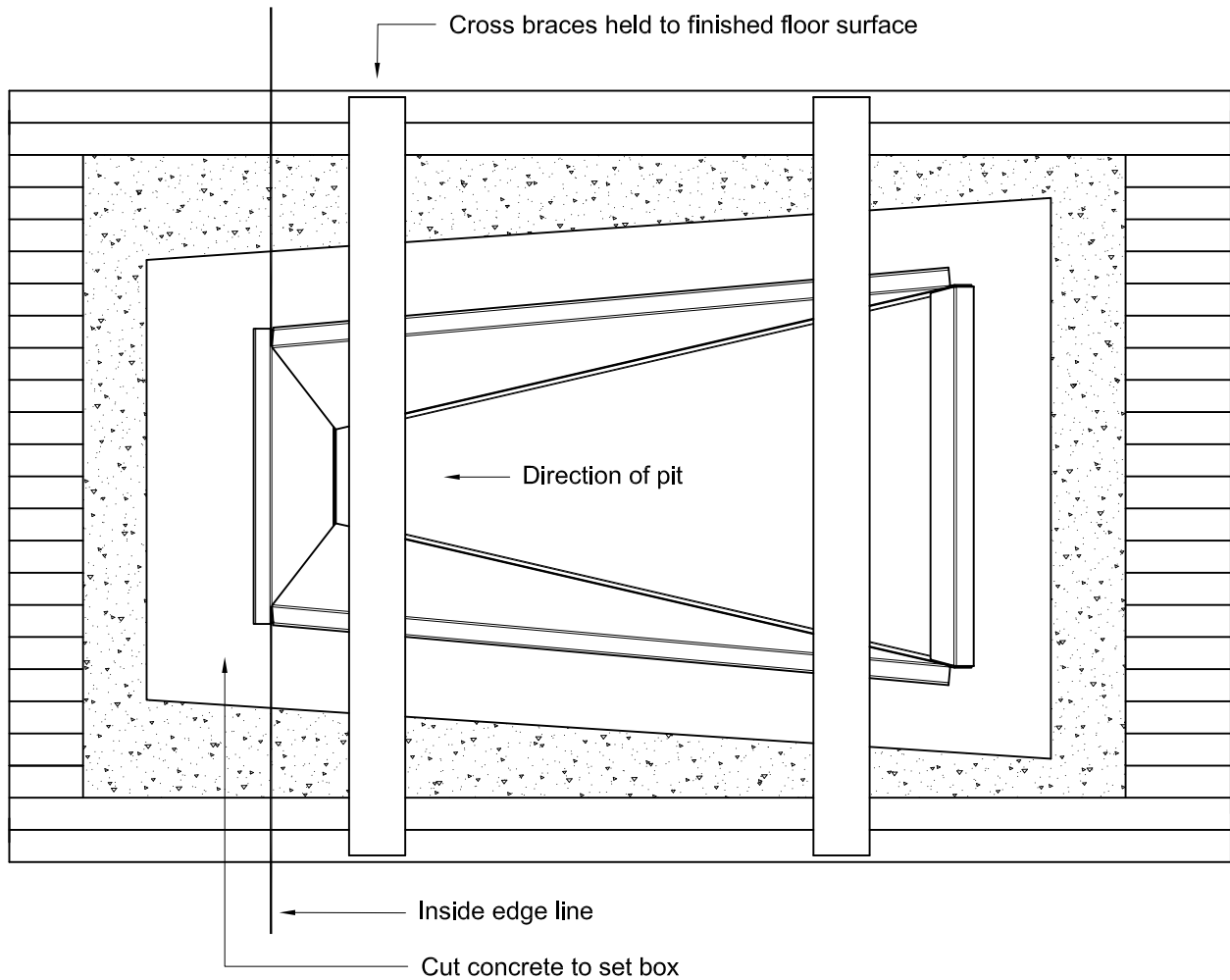
NOTICE: All installations should be conducted by experienced contractors and in accord with all applicable codes, laws and regulations. Suggested instructions herein are illustrative only and should be adapted to suit local requirements. Gill Athletics is not responsible for the manner in which these products are installed.



www.gillathletics.com  
800-637-3090

# 508 SAFETYMAX POLE VAULT BOX INSTALLATION INSTRUCTIONS

## INSTALLATION OF BOX IN GYM FLOOR

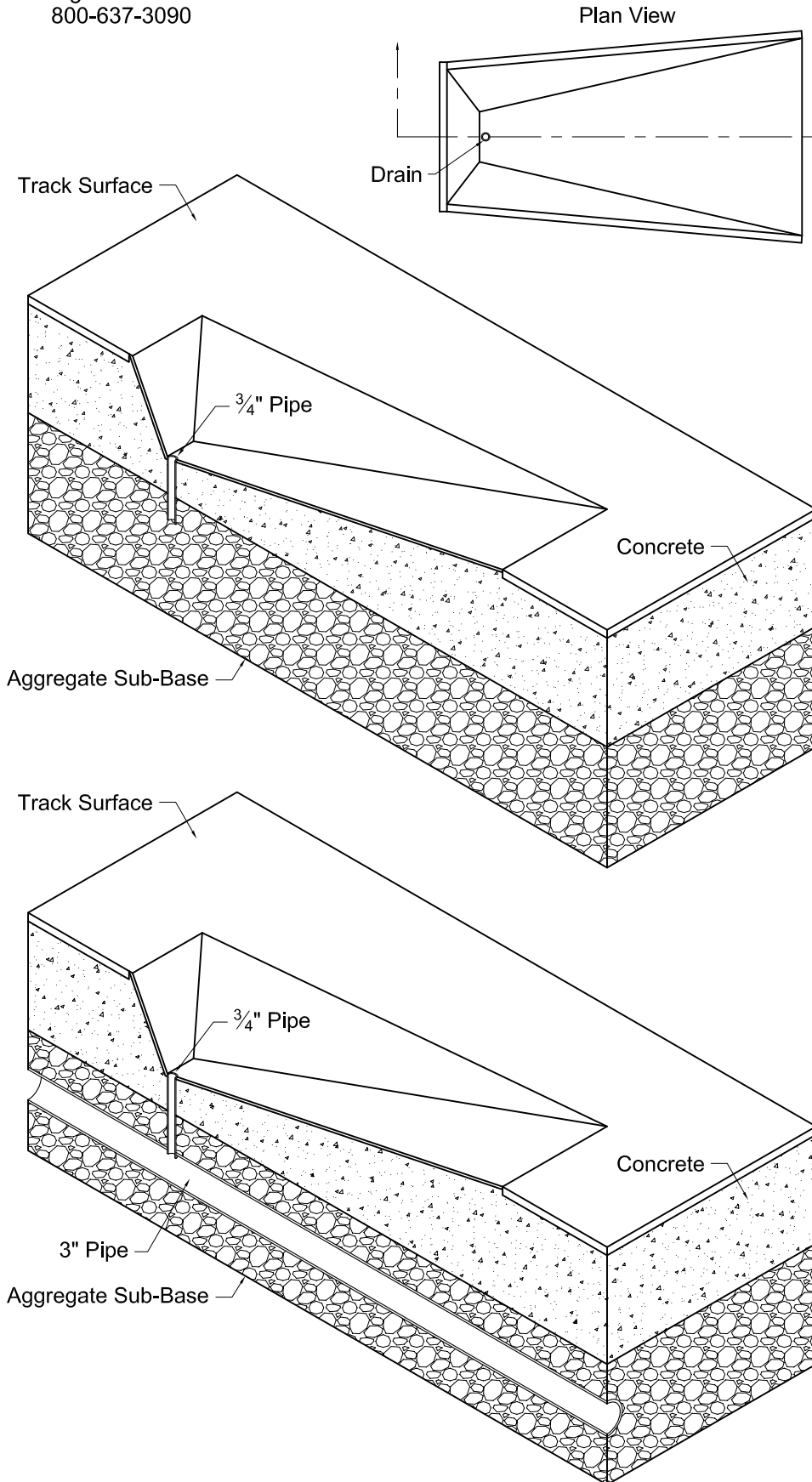


NOTICE: All installations should be conducted by experienced contractors and in accord with all applicable codes, laws and regulations. Suggested instructions herein are illustrative only and should be adapted to suit local requirements. Gill Athletics is not responsible for the manner in which these products are installed.



www.gillathletics.com  
800-637-3090

## POLE VAULT BOX DRAINAGE



There are basically two options for draining the pole vault box; a dry well or an under ground drainage pipe.

Installing a dry well can be as simple as running a  $\frac{3}{4}$ " Sch40 PVC pipe from the a hole (drilled in field) in the bottom of the box down into the aggregate sub grade and pouring concrete around it. If need be, trim the PVC pipe to be flush with the bottom of the box.

**Dry wells are best suited for dry climates. In wetter areas a dry well may actually pull ground water up into the vault box.**

The other method is to use an under ground drainage pipe to take the water away. A small pipe would lead from the bottom of the box to a larger under ground pipe. This pipe would be connected to a storm water system.

The pipe sizes listed here are just suggestions. Other pipe sizes will work. The pipe sizes will determine how fast the tray drains. Also smaller pipes will become clogged with debris quicker.

It is recommended that the drainage pipe connect to an access box close by so that clogs can be easily removed when they occur.

**With any drain system, maintenance must be performed to keep the drains free of debris.**