

# Fusion Starting Block Instructions

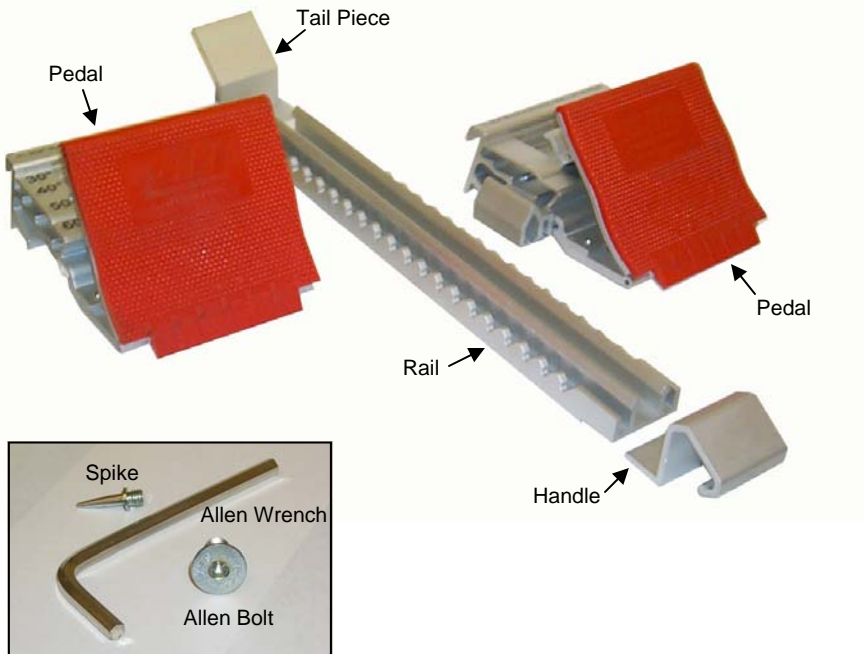


## Parts:

- 1-Rail
- 1- Handle
- 1-Tail Piece
- 2-Pedals
- 16-Spikes
- 2-Allen Head Bolts
- 1-Allen Wrench

## Tools Needed:

- Spike Wrench or Pliers/Vise Grips



**\*\*All Fusion Blocks assemble in the same fashion. The only part that will differ between the Fusion I, Fusion II, and Fusion III is the size and functionality of the pedals.\*\***



Fusion I

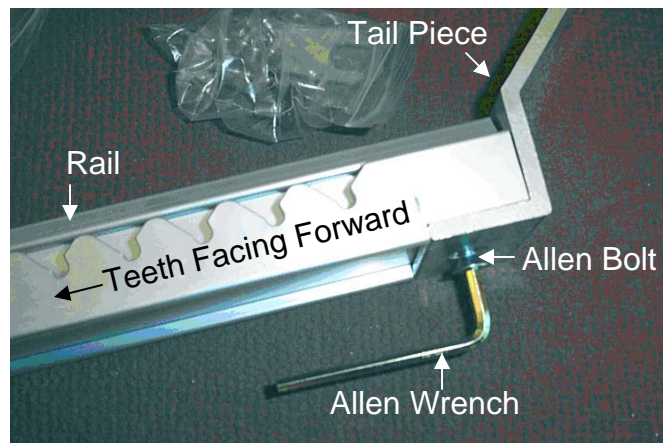


Fusion II



Fusion III

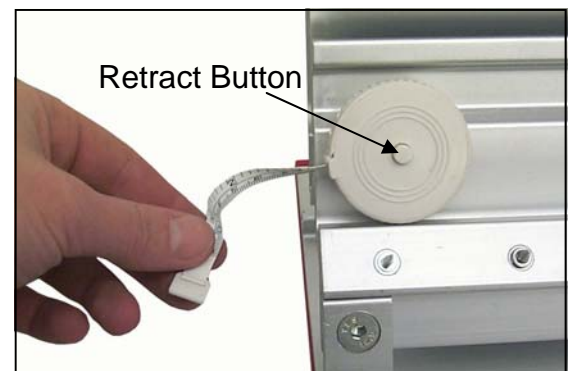
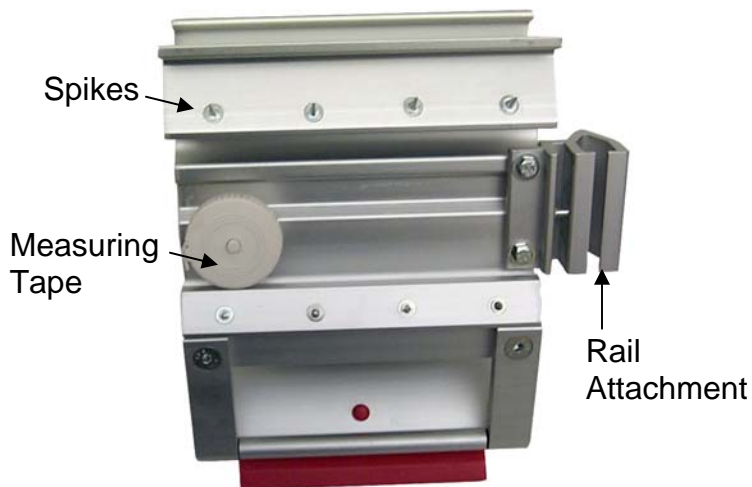
1. Install the tail piece using the Allen bolt and the Allen wrench provided.



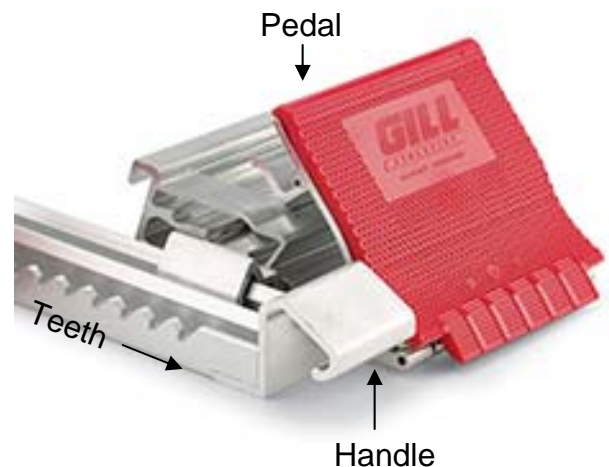
## Fusion Starting Block Instructions



**2.** Prepare the pedals by inserting the spikes and installing the measuring tape. Screw in the spikes into the threaded inserts and then tighten with a spike wrench, pliers, or vise grips. To apply the measuring tape simply peel off the protective covering on the Velcro and stick it to the bottom outer portion (away from the rail) of the pedal. To use the measuring tape pull the tab to expose the tape and push the button in the middle of the case to retract the tape.



**3.** Slide each pedal on to the rail. The back of the pedal should be facing toward the tail piece and the face of the pedal (where the foot is placed) should be facing the toward the handle. After placing both pedals on the rail, then attach the front carrying handle with the Allen bolt and wrench.

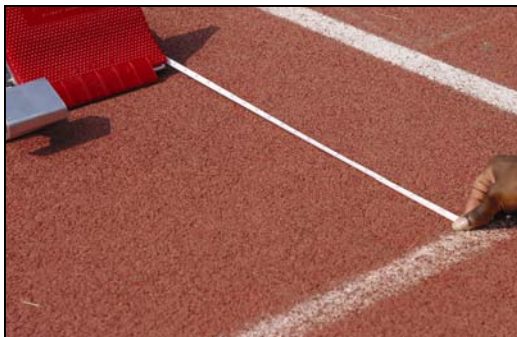


# Fusion Starting Block Instructions

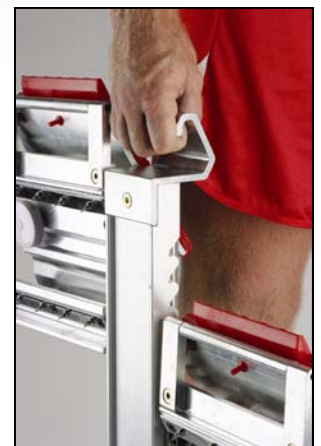


4. Your fusion block is now ready to use. **To seat the block properly, push back and down firmly on the pedals (see picture below).** This will set the spikes into the track surface creating a solid take off platform. The markings on the pedals are 5cm apart allowing the athlete to gauge the width of his/her stance for each race. Accuracy is also ensured with the measuring tape. This allows the athlete to measure the distance between the starting line and the pedal.

**To seat the block push back and down!**

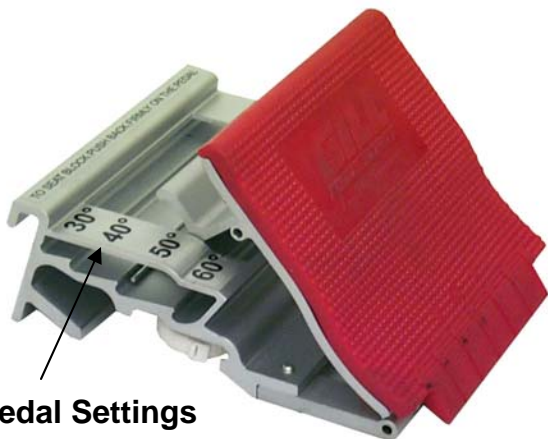


**Using the measuring tape for accuracy!**



**Carry the block with the spikes facing away from the body.**

**The pedals stay on the rails at all times.**



**Pedal Settings**

**On the Fusion I the pedal is adjustable to 60°, 50°, 40°, 30°. To adjust pull back and up on the handle just behind the pedal pad.**

# Fusion Starting Block Instructions



## Replacement Parts List

### Fusion 1



Replacement Pad Only  
73016507

Left Pedal (complete)  
73016509



Right Pedal (complete)  
73016508



Pedal Hardware Kit  
73016501



Rail  
73016502

### Fusion 2



Replacement Pad Only  
73016507

Left Pedal (complete)  
73016609



Right Pedal (complete)  
73016608



Handle Kit  
73016503



Spike Kit  
73016504

### Fusion 3



Replacement Pad Only  
73016707

Left Pedal (complete)  
73016709



Right Pedal (complete)  
73016708



False Start Bracket Kit  
73016505



Pedal-Rail Connector  
73016506