



www.gillathletics.com
800-637-3090

Top Pad Foam Fix Instructions

Top Pad Foam Repair Instructions

Over the course of a pole vault pits life, the materials are often subjected to extreme conditions such as rain, snow, oppressive heat, improper storage, long term sun damage, and general wear and tear. While it is recommended that weather covers are used to prevent weather damage and proper storage and transportation techniques are illustrated in each pits manual, there are often extenuating circumstances that lead to advanced wear, such as the foam in the top pad separating.

The following is a guide to help in fixing this issue.

What you'll need:



Top Pad



Strong Spray Adhesive
(we recommend SBR, contact Gill Rep. for ordering)



Open, Well Ventilated Area
(that you don't mind getting glue over-spray on)



Breathing Protection



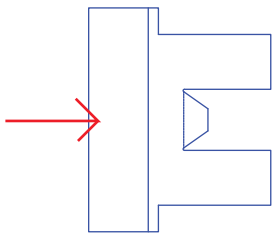
1-2 Hours

1) Unzip top pad around perimeter. Pull out all the foam and arrange back into the shape of the top pad on flat, relatively clean surface. Surface may get glue over-spray on it, so gym floors or indoor areas are not recommended.

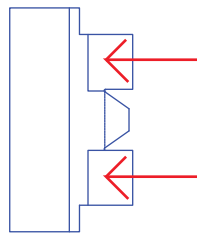
2) On unglued seams, follow application directions on spray adhesive can. Put your mask on if you haven't already. Spray both pieces of joining foam and allow to dry slightly, until tacky. When tacky, firmly press the two sections together along joint.

3) Repeat on each problem area. When finished, let stand for 15-20 minutes.

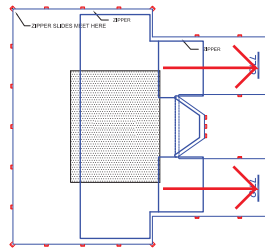
4) To re-stuff top pad casing,



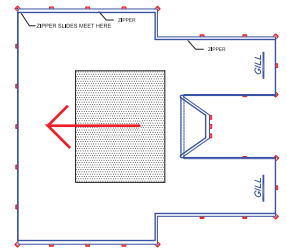
Fold back portion over towards front.



Fold front flaps back towards middle.



Shove foam into casing until box 'V' flap is in place. Unfold front flaps and stuff in place.



Unfold back portion. Check to see if all foam is laying flat and in position. Zip up top pad casing.